



Owyhee Gem



Owyhee Gem & Mineral Society

P . O . B O X 1 0 5 3 C A L D W E L L , I D A H O 8 3 6 0 5 - 1 0 5 3

Board of Directors

PRESIDENT:

Willa Renken 362-3941

VICE-PRESIDENT:

Melissa Jones 8913620

SECRETARY:/sunshine

Sylvia Foreman 459-4554

TREASURER:

Janie Ehlers -674-1213

FEDERATION DIRECTOR:

Ed Moser 340-8060

FIELD TRIP CHAIRMAN:

Larry Beattie 466-6184

ASST: Gene Alvey 440-3067

SHOW CHAIRMAN:

Susan Beattie 66-6184

ASST. Chairman

Darell Ehlers -674-1213

BULLETIN EDITOR:

Joan & Gene Alvey 409-2410

E-mail fosselmoss@msn.com

COMMITTEE CHAIRS

MEMBERSHIP:

Neava Haney 899-1519

HISTORIAN:

Pauline Prather 459-4139

REFRESHMENTS:

Jim&Ruth Hopkins 466-8817

ROAD CLEAN-UP:

Lloyd Summers 461-2140

February President's Message

Hello everyone are you all getting excited our Show is just a few days away and headed this direction fast. It hardly seems that another year has gone by. If you are contemplating putting in a show case Pauline is anxiously awaiting your call so she can assign you a spot. If you have something interesting that will help fill Sylvia's special display I am sure she has plenty of openings so if you can help that would really make her day. Don't forget Friday is our luncheon day and we will need chili, hotdogs, and all the trimmings so our dealers and those setting up can grab a bite to eat. This is always a fun day and everyone makes such great food it always is received well. We will have sign up sheets at the next meeting so please fill them out as this helps the chairmen figure out when they will need extra help.

This months program will be a informational presentation to help you learn how to set up a show case. Pauline and Susan have a great time showing you how they would create the interior and help you to understand how to place your projects so you get the most desirable presentation possible. These cases are one of the best recruiting advertisements we can do as it gives the public a taste of the fun we have, not only collecting but also in creating the beautiful projects we are all displaying.

Larry Beattie has put out a request that he would like some input on the up coming years field trips. He is interested in finding out where you would all like to explore in our up coming season. It is always fun to get to see an area that is new or one we haven't gone to lately so give him a heads up and he will try his best to see you have an opportunity to fulfill your dream.

The Board extends a big thank you in advance for all the continued support you all put out to make our club the success it is. I look forward to seeing you all at our next meeting on the 20th of February.

Willa Renken

WYHEE GEM & MINERAL SOCIETY**JANUARY 16, 2013**

GENERAL MEETING: held at College of Idaho in room 103 at 7:30pm was called to order by President Willa Renken. Willa asked if there were any changes to the minutes as printed in the January newsletter. With no changes to be made Brad Larson made motion to accept minutes as printed in newsletter 2nd by Red Larson and approved by general meeting.

EVENING ACTIVITY: There was not a program for January meeting. The program for February meeting will be setting up a show case for the Show by Pauline Prather.

GUEST: There were 2 guests and 5 juniors for the evening meeting.

SECRETARY: Sylvia Foreman had a Thank-you card from RoseMary Peterson to read to the members.

VICE PRESIDENT: Melissa Jones was not present.

EDITOR: Joan Alvey had nothing to report.

TREASURER: Janie Ehlers gave treasurer's report.

SHOW CHAIRMAN: Susan Beattie was not present but Asst. Show Chairman Darell Ehlers had sign-up sheets for volunteers at the Show.

FEDERATION CHAIRMAN: Ed Moser reported that he had good reports on the show cases at the Caldwell Public Library. Be sure and read your Northwest Newsletter as it has good information and Show dates, places and times that you might like to attend. Keep saving stamps for Cancer Research.

HISTORIAN: Pauline Prather asked the members to fill out their show case application and get them to her as soon as possible.

SUNSHINE: RoseMary was not present but past sunshine Sylvia Foreman reported that Sonia Seid had passed away and she had set her family a Sympathy card, she had also sent a Get-well card to Pat Herman.

Ed Moser made motion to send \$50.00 in memory of Sonia Seid to Northwest Federation Endowment Fund 2nd by Joan Alvey and approved by members.

MEMBERSHIP: Neava Haney introduced the new members for approval.

Ed Moser made motion to accept the new members 2nd by Joan Alvey and approved by members.

FIELD TRIP CHAIRMAN: Larry Beattie reports no January field trip but has a list of proposed field trips and would like your input on them. Larry reports that other Gem Clubs has invited the OGMS club to join them on field trips this year.

WEB SITE: Brad Larson reports that he has improved the OGMS web site.

OLD BUSSINESS: Willa reports that the Black Light Room will be ready for Show. We need to purchase cable covers for the show.

Pauline Prather made motion to purchase the cable covers for \$1200.00 2nd by Joan Alvey and motion carried by all .

NEW BUSINESS: none

SLAB DRAWING: Willa had a number of helpers pulling tickets for slabs.

Door prize was won by Judy Tucker donated by Bill Foreman.

sfs

OWYHEE GEM & MINERAL SOCIETY BOARD MINUTES**JANUARY 28,****2013**

Present at the OGMS Board Meeting held in room 106 at the College of Idaho were Willa Renken, Janie & Darell Ehlers, Joan & Gene Alvey, Larry & Susan Beattie, Ed & Deanna Moser, Neava Haney, Pauline Prather, Bill and Sylvia Foreman.

BOARD MEETING: was called to order by President Willa Renken at 7pm. Willa asked if there were any changes to the minutes as printed in the January newsletter. No changes to the minutes so Darell Ehlers made motion to approve the minutes as printed in newsletter 2nd by Gene Alvey and approved by board.

SECRETARY: Sylvia Foreman had nothing to report.

VICE PRESIDENT: Melissa Jones was not present.

The program for February meeting will be a demonstration of setting up a show case for the show by Pauline Prather.

TREASURER: Janie Ehlers reported that the insurance for O'Connor Field House has been paid for and the cable covers have been taken care of for the show.

EDITORS: Joan Alvey reported that she had received a nice letter from Lloyd Summers and it will be in the newsletter.

Joan requested that all information for the newsletter to be to her by Wednesday the 6th of February.

SHOW CHAIRMAN: Susan Beattie gave a report on how the Show is progressing. The Show Case favors are ready and the advertisement for the show is being taken care of. The Board had the good luck of seeing a video of the New Black Light room presented by Doug Renken.

FEDERATION: Ed Moser had information which will be put in the newsletter for you to read. Keep reading your Northwest Federation newsletter for good information and keep Saving Stamps for Cancer Research.

HISTORIAN: Pauline Prather requested that you send in the Show Case application as soon as possible.

SUNSHINE: Rosemary Peterson was not present.

MEMBERSHIP: Neava Haney reported that she received a phone call from Harold and Deanna Holloway to let her know that they had moved and asked her to say hello to everyone.

FIELD TRIP: Larry Beattie reported no field trip for January.

WEB REPORT: Brad Larson was not present.

OLD BUSINESS: Pauline Prather will take care of the mailing of the post cards for the show.

MEETING ADJOUNED

sfs

Hey Hey It's almost here!!!!!!!

This year's show will be here before you can blink your eye. So I am just reminding you that if you want to show off your treasure you've found, made or purchased and they are ROCK RELATED and you haven't gotten a hold of Pauline Panther to reserve your case, you best get on it ,time is running out. She needs to have your name so she can get your ribbons' made. Make sure you label your items so people will be able to identify what they are looking at. And it's always nice to see the name of the person or persons who have put the items in the case.

And then we must never forget our special display center. These items Do Not Have To Be Rock Related. But if you want your items to be displayed you must get a hold of Sylvia Foremen so she can reserve your spot. And remember after 9:30 am Saturday NO ONE is allowed behind the rope. You can bring your items in all day Friday while set up is going on and **before 9:30** am Saturday.

WE have a new BLACK ROOM this year so if you want one of the cases in there be sure to notify the appropriate person Pauline. Even if you are not putting items in any of this places make sure you come out and enjoy the show it is going to be spectacular.

ja

Federation Report

AFMS NEWS LETTER is available on the web site

www.amFed.org

There are eight items so far for the raffle at this years AMFS Federation show. Tickets are \$5.00 each or five for \$20.00. Drawings will be held September 2013 at the AFMS convention in Jacksonville Florida.

Tickets are available from Chris Blickfeldt 236 Tollgate Rd, Boise Idaho 82716

grumpies@g.com

UPCOMING SHOWS

Feb 23-24 Idaho Gem Club

March 9-10 Magic Valley Gem Club Twin Falls (Filer Fairgrounds)

April 6-7 Southeast Gem and Mineral Pocatello ID

August 9-11 NFMS 75 Anniversary Show in Butte Mt dates have changed so be aware ..

Be sure to save your STAMPS and remember to cut ½ inch all the way around the stamp

Remember everyone the show cases need to be filled and you must let Pauline Panther know in advance so she can get name tags made and most importantly remember THEY HAVE TO BE ROCK RELATED. Also we want to remind you that our cases are opened to all members including our junior members.

The SPECIAL DISPLAY is also open to all but you can get in touch with Sylvia Foreman.

You must be set up BEFORE 9:30 Saturday NO ONE will be allowed behind rope after 9:30 Saturday NO ONE

Membership Report

Thank You to all that responded to the call of updating your 2013 membership! Many of you have not received your updated membership cards, please let me know. I will have them at the upcoming meetings and also at the show in March. For those of you that have not renewed, I will also have the applications available too.

Dues are \$20.00 for a family, \$18.00 a couple or \$12.00 for singles. Children (18 and under) are \$3.00 each.

Reminder: You get with “New Membership” – A membership card, a small patch and your name badge at no charge. With your “Renewal” you will get your membership card for the New Year. (Usually you can pick up your name badge at the next club meeting while enjoying refreshments and meeting new friends after the meeting)

We have had some inquires for replacement of Name Badges or small patches that have gone astray. You can purchase the Name Badge for \$2.00 and/or the small patch for \$3.00 each. We also have the big patches for \$10.00.

Remember to wear your name badge so everyone knows who you are.

Neava Haney 899-1519
wehnjh99@cableone.net



Show Chairman Report

If you are familiar with some details for running any of these venues from previous shows, please feel free to let Susan or Darell know what those details are so that we can assist the venue chairs and keep your show consistent from year to year. We are both new to the club and really appreciate knowing how things have been done for previous shows—so give us a call!

This is what the chairperson will do:

1. They will ask you to sign up to help for two-hour intervals on Saturday or Sunday.
2. They will call to remind you of your day and time.
3. They will assign you a task and give you the information you need and answer your questions.

This is how you can help:

1. Commit to a day and time for the venue(s) that you would like to help with.
2. Bring a chair cushion, jacket, and water.
3. Ask your venue chairperson any questions you have about what to do at that venue.

The chairperson's) for the venues are:

Front Door:	Randy Whipple	585-5910
Sand Dig:	Jody Atwood	801-791-7228
Grab Bags:	Mike and Judy Tucker	936-9871 / 880-7100
Wheel of Gems:	Myrt Alston / Lillie Rogers	739-8185/ 465-5529
Silent Auction:	Red Larson	465-8083

THANK YOU to the chairpersons for pitching in to keep the venues running smoothly; and for all of you that volunteer at venues to help the show be successful. Our club could not do this without your help!

Susan Beattie and Darell Ehlers

Rock -N- Gifts

942 South Lincoln • Jerome, Idaho 83338

(208) 324-8860

Bruneau Jasper

Cabs - Slabs - Specimens - Rough

Gerald & Joy Scarrow

(208) 324-4024

Rocky & Kelley Scarrow

(208) 324-1034

rockingift@cableone.net

STRINGER'S GEM SHOP

Idaho Opals

Picture Jaspers & Plume Agate

Bolos & Buckles

Bookends & Specimens

Birthstone Jewelry

Tumblers & Equipment

WHITES METAL DETECTORS

W.A. (Bill)

& Anna Stringer

1812 West Orchard

Nampa, Idaho 83651

1 Mile South of Karcher Mall

(208) 466-5169

M-F 1:30-5:30 pm

Other Hrs. By Appointment

BIG SLAB SALE

I cut these slabs many years ago we acquired them after
Many years of collecting

I am letting you fellow club members

Have the first pick before I advertise them for

Sale out to the public I will be in the shop and ready
for you to make an appointment to see these slabs so give
me a call

Sold by appointment only for slabs

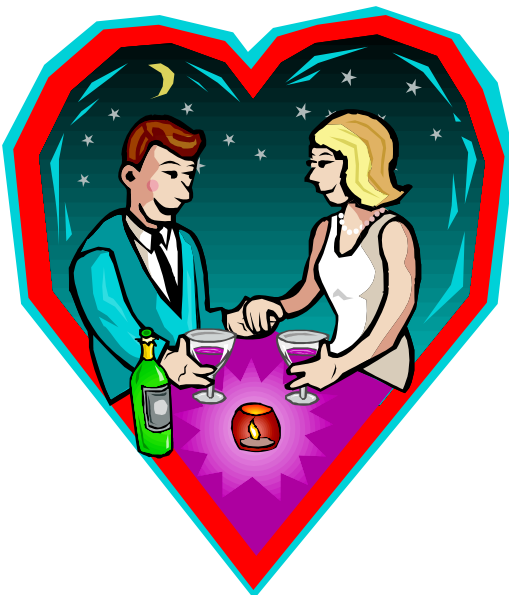
Regular hours for everything else

Bill Stringer

Paul Dole	2/5
Bill Foreman	2/21
Greg Hill	2/26
Jaun Pena	2/7
Mike & Judy Tucker	2/26
Steven York	2/10
Ruth Hopkins	2/11
Deanna Moser	2/25
Carolyn Roberts	2/27
Lonalee Hoogland	2/20
Shirley Metts	2/14



Well here we are with these Happy Birthday and Anniversaries .I hope I haven't missed anyone



Linda & Kurt Fosnaugh **2/14**

Carolyn & Neil Roberts **2/24**

Rock Hunting

Hit the Rock
Split the Rock
Throw it back down

Pick a Rock
Lick a Rock

Look all around

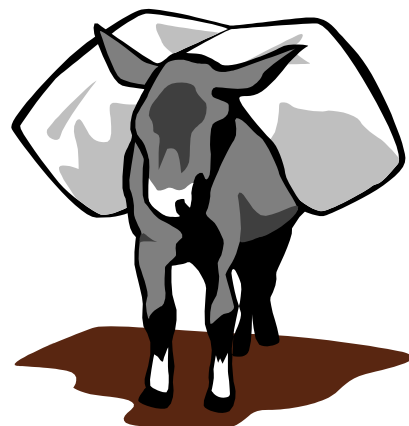
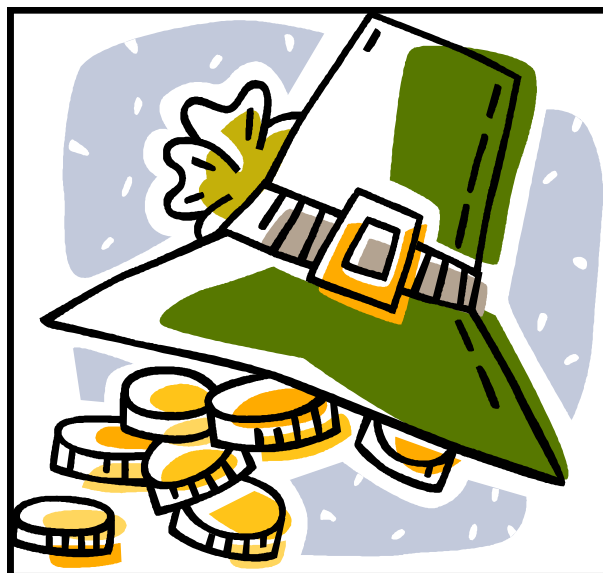
Take a Rock
Break a Rock

Your Heart starts to pound

What a Rock!
What a Rock!

It's a Prize you have found.
Found in the Owyhee Gem edition for Feb. 1982

You don't even have to be a leprechaun to find our Idaho gems all you have to be is a ROCK HOUND and a digger. Get Ready cause our field trips will soon be starting. Larry has a list of possible trips but if you have any ideas of a new place we could go just let Larry know .



Just a little note from one of our lucky members who are in warmer climate

Not to rub it in but it is warm here. We did have a couple days with freeze warnings but compared to you guys it is has been nothing but nice.

Went to Quartzsite yesterday. My first time to the rock show there. It is quite an experience, vendors from all over, including several from Idaho. Picked up a few nice specimens.

Met Noyam and Tony who have Service Station Gems in the old Conoco station as you come across the river into Marsing. I didn't even know they were operating a rock shop out of there.

Stopped by Larry Ridley's shop and visited for a few minutes. He says he will be back for our show.

I will go to Tucson next month and take a walk through the show there.

REMINDER: Tentative Highway clean-up date is 13 April. I will be back to Idaho in time to finalize the schedule with the Highway Department and I will be at the March meeting to provide needed information.

Hope the show goes well, sorry I won't be there to help, but I can't p my wife out of here until your weather improves.

Lloyd Summers Road Cleanup Chairman



Purpose: To promote interest in the wonders of nature and in particular, Rocks, Gems, Minerals, and Fossils. To conduct field trips for exploration and collection. To encourage as wide a participation as possible in the “Rock Hound” hobby and the many activities that go with it.

MEMBERSHIP DUES:

Family— \$20.00 per year

Couples - \$18.00 per year

Singles - \$12.00 per year

(18 and under)

Children - \$3.00 per year

The Owyhee Gem and Mineral Society was established in 1938 at the College of Idaho in Caldwell.



GENERAL MEETING: The club meets the third Wednesday of each month at 7:30 P.M. in the Boone Science Building at the College of Idaho, except for the July picnic and the December party. Field trips are scheduled once a month. Visitors are welcome at all these events!

Bring a friend—Wear your name tag
Bring an identified slab



Joan & Gene Alvey
94North 29th Street
Nampa, Idaho 83687

