



Owyhee Gem



Owyhee Gem & Mineral Society

P . O . B O X 1 0 5 3 C A L D W E L L , I D A H O 8 3 6 0 5 - 1 0 5 3

Board of Directors

PRESIDENT:

Willa Renken 362-3941

VICE-PRESIDENT:

Melissa Jones 8913620

SECRETARY:/sunshine

Sylvia Foreman 459-4554

TREASURER:

Janie Ehlers -674-1213

FEDERATION DIRECTOR:

Ed Moser 340-8060

FIELD TRIP CHAIRMAN:

Larry Beattie 466-6184

ASST: Gene Alvey 440-3067

SHOW CHAIRMAN:

Susan Beattie 66-6184

ASST. Chairman

Darell Ehlers -674-1213

BULLETIN EDITOR:

Joan & Gene Alvey 409-2410

E-mail fosselmoss@msn.com

COMMITTEE CHAIRS

MEMBERSHIP:

Neava Haney 899-1519

HISTORIAN:

Pauline Prather 459-4139

REFRESHMENTS:

Jim&Ruth Hopkins 466-8817

ROAD CLEAN-UP:

Lloyd Summers 461-2140

January Presidents Message

As the snow falls I hope you are all by a warm fire candling those special pieces you collected over the past year. If you were not able to be with us last month our Christmas Dinner was a fabulous time. We honored our lifetime members that were able to be with us. For those of you who couldn't make it you were not forgotten as we did miss you being able to share such a special time of year together. We were able to honor three new lifetime members, Bill & Sylvia Foreman, & Pauline Prather. These individuals have done so much for our club that the Board felt it was time they join this special group of our club members. We welcome them with open arms. Congratulations!!

If you are looking for something to do Ed Moser has set up with the Caldwell library for several of their cases to be filled with club members projects. It is nice to be able to support the Library as it has helped us to promote our hobby and Annual Show each year.

As the show draws closer we need to be thinking about show cases, the special display items, and the various event tables that will need to be manned. There should be sign up sheets available at the next meeting so you can be thinking of what time frames you could participate in. Susan will be going over the schedule and timing for the show setup and various important issues. Pauline will be taking show case applications so be sure to get with her if you would like to put in a display. I look forward to all the wonderful displays each year all we ask is that you keep it rock hound oriented.

Keep warm stay safe and watch out for the other driver and we will see you on January 15th at 7:30pm.

Willa Renken

OGMS President

GENERAL MEETING: No General Meeting but a very nice Christmas dinner party for Owyhee Gem Club, at Orphan Annie's in Caldwell December 19, 2012. It was a good turn out of members and guest for the evening. The President Willa Renken gave out Thank-yous to our out going club officers, the vice president Judy Tucker and the refreshment chairman Mike Tucker, and welcome to the ones taking their place. Melissa Jones will be the vice president and Ruth & Jim Hopkins will be in charge of refreshments. It was very nice and fun having the old time members taking part with us for the evening. We were privilege d to have life time members Evelyn & Everett Ensley, Roy & Pat Bethel and last but not least Mae Aman join in our holiday party. The gift exchange, center pieces, plants and the surprises were all very nice and was excitedly presented to the crowd. OH, YES a Young Man was introduced as he became a member of Over-the-Hill Gang. We all know him as Doug Renken.

Doug we all love you.

Sfs

A BIG THANK YOU TO ALL MEMBERS OF OWYHEE GEM & MINERAL SOCIETY

On the 19th day of December 2012 Bill and Sylvia received an Honorary Plaque to hang or our wall at home, we say thank-you but we do not need a wall plaque as we enjoy the friendships and the activities that we can take part with in this club. We are very proud and honored to be among the members of such a grand rock club.

SYLVIA & BILL FOREMAN

As the date for our monthly Board meeting fell on December 31 we cancelled and changed the date to January 7th, but due to the weather and very bad roads Willa canceled the meeting so there will be no Board meeting until January 28th

The news letter will be a bit late this month but I hope this doesn't cause any problems. Remember our show is just around the corner so if you haven't started planning you best get started.. The show is just the first weekend in March so not too far away at all. There is a form in this news letter for all who plan on putting in a display case to fill out and give to Pauline by the 20th or as you all know is our meeting date for February There are 52 cases to fill and all must be Rock related. Sylvia on the other hand **NEEDS ITEMS** for the **SPECIAL DISPLAY SHELVES**. These do not have to be rock related so get out our special treasures and let Sylvia know what you plan on displaying, And we will have sign up sheets at the meeting for all of us who want to help make this the biggest and best show ever, Just get a hold of Susan and let her know when and which both you want to help in. Remember this is our show and our way to expand the rock hunting hobby. And show off all our great finds and fantastic works of art.

OUR FRIENDS, BILL & SYLVIA FOREMAN

Bill & Sylvia are truly all of the members of the Owyhee Gem Clubs friends. They are such an important part of the lives of this club that one can not even think of an activity they are not involved in.

Every spring the rock club show highlights what a wonderful world of gems we live in. Sylvia is one of the gems who greet you at the door. This is only after she has seen that the special display has been filled, prizes have been made for the Wheel Of Gems among other jobs that needed to be done. Yes, Sylvia will tell you that she doesn't do this alone and she is right but we all need someone to lead or show us how.

Bill had spent many years getting that top dollar for the club at the Silent Auction Table. He not only had to keep fresh treasures on the table for the bidders but before the show he was rounding up the collections that were being donated.

Sylvia's talents are many. She facets beautiful gems, silversmiths, sews wonderful bears, tends a large garden with Bill and makes the best cookies and candies. Sylvia is the Secretary and as such is always at the meetings to record them for all to read. I am sure I have left out many more of her talents but this will do for a start.

As for Bill, the first thing that comes into mind are his beautiful spheres of all kinds. Can you believe he makes them all by hand without a sphere machine to help him? Just ask Bill how many cuts it takes to make one sphere, it will boggle your mind. Bill also works with wood & polishes brass to make unique items. Who is the walnut man? Well that will be Bill also. He knows just when & how to split a walnut to get the meat out in one piece, a real knack.

They were Bulletin Editors for many years and are the Sunshine of the club delivering cards and plants to whoever needs cheering up. If anyone needs help just give them a call.

There are many more rolls that they have both taken on at the Owyhee Gem Club and we are all much richer for knowing them.

Bill & Sylvia, here is a big THANK YOU from all the members. We are so proud to know you both.

Owyhee Gem Club
By fb

Bring your Postage Stamps to this months meeting.

Remember to *cut 1/2 inch all the way around the stamp.*

Give them to me at the OGMS meeting.

The money raised will go to help support **CANCER RESEARCH.**

thank you all for this it dose
help others and it might just
Help some one you might know..
Ed Moser Federation Director

SUNSHINE REPORT

To All Members OF the OGMS:

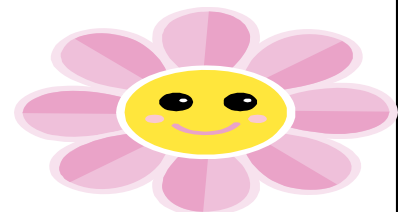
It is time for me to thank you for allowing me to have the enjoyment of serving as your Sunshine Lady, but it is time for me to pass this position on to a Lady who will be more tan capable of doing a great job her name is Rosemary Peterson her phone number is 208-546-1897. Please remember her job depends on all of us keeping her informed of the folks who need a Get Well Wish, Sympathy Card or just a little Pick ME up Card.

To you Rosemary ,Bill and I have enjoyed this position and I am sure you will Also. A GREAT Big Thank You to you all. (You are not free of me Yet.)

As my last duty I sent a Sympathy Card to the family of Sonia Seid as she passed away just before Christmas.

Thank you one and All, I hope Rosemary you enjoy this position as much as I have. And if you need any assistance just give us a call.

SF



Membership Report

As I update the membership roster for 2013, if you have any changes regarding addresses and phone numbers, please let me know. My contact information is listed below, you can give me a call or contact by email. We want you to receive the newsletter to the correct address. Besides this is the only way we can insure our contact information is current.

Reminder: You get with “New Membership” – A membership card, a small patch and your name badge at no charge. With your “Renewal” you will get your membership card for the New Year. (Usually you can pick up your name badge at the next club meeting while enjoying refreshments and meeting new friends after the meeting)

We have had some inquires for replacement of Name Badges or small patches that have gone astray. You can purchase the Name Badge for \$2.00 and/or the small patch for \$3.00 each. We also have the big patches for \$10.00.

Remember: wear your name badge so everyone knows who you are.



Neava Haney 899-1519
wehnjh99@cablone.net

Show Report

Sylvia wants us all to be thinking of our items we want to put on the Special Display Case. Remember this is where we can display any Special Items ,they do not need to be Rock related they can be anything we want to share and that are special to us and therefore might be enjoyable to others . Just let her know as soon as possible what you will be sharing so that she can organize the display. Also Pauline needs the name of the folks that will be putting in a show case so let her know by February 20th. There are 52 cases to fill and these need to be Rock Related.

JA

Meeting Notes From Andy Krivy from a Wilderness Committee Meeting on December 13th, 2012 that was held in Jordan Valley, Oregon at the Parish Hall.

Andy was representing the Owyhee Gem and Mineral Society per the discussion during the Club July picnic meeting at the Caldwell Park when Ken Davis spoke about the initiatives to designate most all of SE Oregon as Wilderness Area. Ken represents the Malheur chapter of the Oregon Hunters Association and the Disabled American Veterans, D-Day Chapter 18.

Our clubs interest is to at least keep our current access and abilities to use motorized travel as much as possible.

I will just summarize what the high points were and would be glad to discuss more in person verbally at an up-coming club monthly meeting. I will get a list of people's names, contact information for the next update.

The group holding and running the meeting is chartered by the Malheur County court that has jurisdiction over the large area basically most of SE Oregon to generate a response to a Lawsuit that was filed by some *environmental groups*. Bob Skinner is the chairman of the taskforce appointed by the judge. One lady did had a projector system and works for their county on maps, so she had detailed views and helps navigate the discussion about certain roads and areas. About 15 people were in attendance, some of them were voting members in the task force, others like me, are not voting members. They had a representative at the meeting from the Theodore Roosevelt Conservation Association, (Mia Sheppard). She discussed what their groups interest was which aligns with prevention of more wilderness, no access area. Summary was that if the area was designated for their groups requirements this prevents it becoming a wilderness area. The primary restriction from current access would be no new roads. So some grey area's that would have to be dealt with such as how to define a road.....

After she spoke, Bob Skinner had the map lady focus a presentation on maps of the area in discussion. The county is trying to identify all the roads so this taskforce work falls in with it. Many ranchers, other interested parties such as the county Sherriff ended up having the discussion focus on the whole area maps, and finalizing a response back on what roads and close areas they want to keep open to current access. They wanted to leave the larger more complicated whole area as wilderness as the second priority after all the roads they want from the current WSA area in the canyon. They will now keep me on the regular meeting email updates and I will plan to attend all the meetings. Sounds like the next one will be most likely in February 2013. Everyone in attendance at the meeting in Jordan Valley was in support to keep current access levels intact in the whole area. One thing I learned was that the Owyhee Reservoir canyon, basically from the dam way up river from rim to rim is already a WSA(Wilderness Study Area), which is a precursor to it ever becoming a wilderness area.

Please feel free to give me a call or e-mail if you have any questions or something for me to ask at the next meeting. Andy Krivy Cell # 208-841-7214, E-mail Andy@infinitysignsnw.biz.

Rock -N- Gifts

942 South Lincoln • Jerome, Idaho 83338

(208) 324-8860

Bruneau Jasper

Cabs - Slabs - Specimens - Rough

Gerald & Joy Scarrow

(208) 324-4024

Rocky & Kelley Scarrow

(208) 324-1034

rockingift@cableone.net

STRINGER'S GEM SHOP

Idaho Opals

Picture Jaspers & Plume Agate

Bolos & Buckles

Bookends & Specimens

Birthstone Jewelry

Tumblers & Equipment

WHITES METAL DETECTORS

W.A. (Bill)

& Anna Stringer

1812 West Orchard

Nampa, Idaho 83651

1 Mile South of Karcher Mall

(208) 466-5169

M-F 1:30-5:30 pm

Other Hrs. By Appointment

Don't Need A Weatherman OR DO WE

A tourist stopped at a country gas station. While his car was being serviced , He noticed a old-timer basking in the sun with a piece of rope in his hand. THE tourist walked over to the old timer and asked," What do you have there?" "That's a weather gauge ,sonny", the old-timer replied.

"How can you possibly tell the weather with a piece of rope?"

"It's simple .When it swings back and forth ,its Windy and when it gets wet, Its Raining.

Does this sound familiar to our weather reports?

Submitted by Joe and Joan Baker in Owyhee Gem June 1996

I did do a few alteration to this little bit of humor

JA



Hopefully I haven't miss any, but if I have I sure do apologize.

Kurt Fosnaugh	1/24
Melissa Jones	1/5
Chuck Goertzen	1/20
Melissa Jones	1/5
Larinda Meyer	1/29
Jerry Sherer	1/18
Robert Sudweeks	1/24
Barb Wilson	1/18



Connie and David Couch	1/9
Linda & Bob Bouy	1/22
Betty and Isaac Ward	1/22
Dan & Linda Phillips	1/21

This page is for the form to fill
out for the cases.

Editor of a Newsletter



I've read a lot of things
 But never knew it all.....
 Typing on paper is Pride before the fall
 Faithfully I copied other errors with my own,
 My only consolation is in this I'm not alone.

Articles of meaning are what we hope to read,
 "If no one writes, I borrow any exchange I need."

When all the typing's finished the Paper has begun.
 With mistakes and errors----
 Then stapled and it's DONE

I worked a pile of hours:
 I'm glad this issue's through
 Next time around at least I know My errors will be new.

From Golden Spike News-via T-Town Rock Hound and the Rock
 Ramblings 4/87 via SMS Matrix 12/87 and Owyhee Gem 6/98

Getting out a Bulletin

If we print Jokes, some say we are silly;
 If we don't some say we are too serious.
 If we print original matter we lack variety;
 If we don't we are too lazy to write it.
 If we print News, some say we are Nosey, if
 We don't, some will be offended.
 If we print contributions, it's full of Junk;
 If we don't we don't show appreciations
 Like as not someone will say we swiped this;
 Well, we did! From another bulletin!
 No telling where they got it!
 I got it from "Gem" 1977
 JA



Purpose: To promote interest in the wonders of nature and in particular, Rocks, Gems, Minerals, and Fossils. To conduct field trips for exploration and collection. To encourage as wide a participation as possible in the "Rock Hound" hobby and the many activities that go with it.

MEMBERSHIP DUES:

Family— \$20.00 per year

Couples - \$18.00 per year

Singles - \$12.00 per year

(18 and under)

Children - \$3.00 per year

The Owyhee Gem and Mineral Society was established in 1938 at the College of Idaho in Caldwell.



GENERAL MEETING: The club meets the third Wednesday of each month at 7:30 P.M. in the Boone Science Building at the College of Idaho, except for the July picnic and the December party. Field trips are scheduled once a month. Visitors are welcome at all these events!

Bring a friend—Wear your name tag
Bring an identified slab



Joan & Gene Alvey
94North 29th Street
Nampa, Idaho 83687

