

# "Owyhee Gem"

## Owyhee Gem & Mineral Society

P.O. Box 1053 Caldwell, Idaho 83605-1053

### BOARD OF DIRECTORS

**PRESIDENT:** Willa Renken  
(208) 362-3941, Wlr\_dkr@msn.com

**VICE-PRESIDENT:** Roxanne Franklin  
(208) 577-7095,  
rocksfrank22@gmail.com

**SECRETARY:** Christine Deveau  
(208) 994-8026, dragonflylight@q.com

**TREASURER:** Debbie Lawrence  
(208) 869-7585,  
debbielawrenceogms@gmail.com

**FEDERATION DIRECTOR:** Ed Moser  
(208) 340-8060, edmoser15@gmail.com

**FIELD TRIP CHAIR:** Robert Murphey  
(208) 590-1848  
robert.murpheyogms@gmail.com

**ASSISTANT:** Dale Rawson  
(208) 283-7990

**2021 SHOW CHAIR:** Paul Deveau  
(208) 994-8025 devidaho@q.com

**ASSISTANTS:** Karen and Brian Davis  
(208) 409-8936 bkdavis76@gmail.com

**NEWSLETTER EDITOR:**  
Denise Stringer, (208) 283-1903,  
denisemstringer@gmail.com

**MEMBERSHIP:** Kim Bashford  
(208) 454-7287,  
kmcewan1957@msn.com

**HISTORIAN:** Pauline Prather  
(208) 459-4139

**SUNSHINE:** Jewels Haines  
(760) 331-3443,  
jewelsmalia@yahoo.com

**WEBMASTER:** Brad Larson  
ogms.webmaster@gmail.com

**ROADSIDE CLEAN-UP:** Bill Anderson  
(208) 919-3507,  
billybushman1@yahoo.com

### June President's Message

Hello all! It is hard to believe it is already June. Hope you all are venturing out into the hills in search of the ultimate find of the year. With that in mind, our next field trip is June 18th to Jamieson for Bog Wood. Meet at the Rest Stop Idaho/Oregon Border (Ontario Welcome Center) at 7 a.m. to leave at 7:30.

Howard Emery will be giving this month's program and it will be on fossils of the Salmon city formation. It should be very informative. Roxanne has been presenting some interesting programs this year. If you know of someone to give a short talk on a subject that you think the group might find interesting please let her know.

We are recruiting for a field trip chair and assistant field trip chairperson. Robert and Dale have said they would not be leading us next year so we will be in need of someone to step forward and fill their positions. If you could help the club out in volunteering it would be greatly appreciated. These positions are one of the more rewarding ones as you get to help others learn how to rock hound. Robert said he would help anyone to learn the places to go and help you scout out the locations. You really don't need to have been in the club long to do this job just have a desire to make friends.

We will be having another slab drawing so if you have an extra slab or two your donations is always appreciated. Thank you to all who give so freely so others can enjoy collecting new material to work on.

I look forward to seeing you all at the meeting on June 15<sup>th</sup> at 7pm. Remember June starts on a Wednesday so the meeting is a little earlier in the month than normal. See you then.

-Willa Renken, OGMS President



**OWYHEE GEM & MINERAL SOCIETY GENERAL MEETING MINUTES 18 MAY 2022**

The May General Meeting of the Owyhee Gem and Mineral Society was called to order by **President, Willa Renken** at 7:00pm at the College of Idaho, Boone Science Center, Room 103. Roxanne Franklin made a motion to accept the minutes as printed in the newsletter; Ed Moser seconded; motion passed. Willa welcomed all new members and visitors to the OGMS family.

**Ted Diehr** presented part 2 of his talk on Sandstone and Shale ... where oil and gas are found. What is fracking and the pros and cons of the process. He presented a different perspective about the rock around us, due to his career as a petroleum engineer... very interesting. Thank you, Ted, for sharing your knowledge with the membership.

**Secretary, Chris Deveau** gave a letter from Howard Emry to VP, Roxanne Franklin. Three memberships will be forwarded to Kim Bashford, Membership Chair for processing. One returned newsletter will be forwarded to the corrected address. A notice from the Oregon Dept. of Geology & Mineral Industries regarding a gold mine in Malheur County was shared with the membership. Webmaster, Brad Larson confirmed a scam advertisement/ bill for web services, which was shredded.

**Vice President, Roxanne Franklin** confirmed that member, Howard Emry will make a fossil presentation at the June General Meeting.

**Treasurer, Debbie Lawrence** reported on the club deposits and expenditures.

**Show Chair, Paul Deveau** advised everyone that we need polished rock for the various venues. He again thanked everyone that volunteered at the Rock Show. It was a great success!

**Federation Chair, Ed Moser** will be attending the NW Federation meeting in Kennewick, Washington on May 21<sup>st</sup> and 22<sup>nd</sup>, 2022. He reminded everyone to bring in stamps, cancelled or not, for donation to the NW Federation. They are sold by the Federation to stamp collectors and the funds are donated for breast cancer research. He is taking over four banana boxes full of stamps brought in by OGMS members over the past two years. Ed also wanted everyone to get out and enjoy our rock collecting hobby but watch out for ticks and snakes!

**Field Trip Chair, Robert Murphey** said the trip to the Big Egg Claim was very successful...good turnout... everyone got some 'eggs.' The next trip is to the club Pink Plume Claim on Saturday, 21 May 2022, meet at Owyhee Junction, Hwy 201 and Owyhee Avenue) at 8:00am... leave at 8:30am. Also, the BLM will be sending an officer for a fire safety briefing as this is Fire Safety Month.

Willa extended the invitation of the Idaho Gem Club to our membership to the Beacon Hill Claim above Weiser. It will be on both days, the 4<sup>th</sup> and 5<sup>th</sup> of June 2022. Meet at the Ontario, Oregon rest stop on the right just as you cross into Oregon on I-84 at 8:00am, leave at 8:30am. This is a guided trip... do NOT go past the gate up to the claim without Willa or Doug present... we are crossing private land.

**Unfinished Business:** none

**New Business:** David Schmidt shared a free event put on by the Idaho Free Trappers happening on the 21<sup>st</sup> and 22<sup>nd</sup> of May. 'A Living History Rendezvous' at the Black's Creek Shooting Range.

The slab drawing was held.

**Andrew Weiner** won the door prize, 'The Audubon Society Field Guide to North American Rocks and Minerals'... from last month's winner, **Ken Freeze**. (Whoever wins the door prize, brings a rock-related gift for the door prize next month.)

There will be no May 2022 Board Meeting. The June General Meeting will be held at the College of Idaho, Boone Science Center, Room 103 on Wednesday, 15 June 2022 at 7:00pm.

The meeting was adjourned at 8:40pm.

Respectfully Submitted, Christine Deveau, Secretary



## Vice President's Corner—Roxanne Franklin

[Owyhee Gem & Mineral Society | Facebook](#)



### Monthly Meeting Topic

If you have an idea for a presentation or information session, please contact me: Roxanne Franklin (208) 577-7095, rocksfrank22@gmail.com

### "My Favorite" Presentations

If you have a favorite rock, gem, mineral, or fossil you would like to talk about and share with the members at the next meeting and in the newsletter, please contact Roxanne.

### June 15th Meeting:

"Fossil Flora of the Salmon City Formation: Evidence of Climate Change in East-Central Idaho During the Oligocene Epoch" by Howard Emry

## Federation Director—Ed Moser



Bring your postage stamps to the next meeting. Remember to **cut ½ inch all the way around the stamp**. The money raised will go to help support cancer research. Thank you all for this. It helps others and it might just help someone you know.

Please Respect the Rules when you are out collecting rocks, be careful of ticks and snakes, and have fun.

-Ed Moser, Federation Director  
(208) 340-8060,  
edmoser15@gmail.com



**Sue the dinosaur will  
be at the  
Discovery Center of  
Idaho starting  
May 27th, 2022**

**For more information,  
go to:**

**[www.dcidaho.org/sue-the-t-rex-experience](http://www.dcidaho.org/sue-the-t-rex-experience)**







**Robert  
Murphey**

Robert Murphey (208) 590-1848  
or Dale Rawson (208) 283-7990

**Dale  
Rawson**



### **USEFUL ITEMS TO BRING ON YOUR TRIP**

Buckets, Shovels, Rock Hammer, Pick (Large and Small), Sieve, Gloves, Spray Bottle for Water, Small Scrub Brush, Knee Pads, Magnifier, Plenty of Drinking Water, Food, Appropriate Clothing, Protective Eyewear, Sun Protection, Day Pack or Back Pack, Umbrella, Pry Bar, Tick Spray, First Aid Kit, Shovel and fire extinguisher to put out any fires that may start.

Trips can last most of the day.  
Generally, a High-Clearance vehicle and sometimes 4WD or an ATV is required.

Remember, when you are finished, fill in all holes that are dug at the site.

**ALL FIELD TRIPS ARE SUBJECT TO CHANGE  
DEPENDING ON THE WEATHER AND ROAD CONDITIONS.**



### **June 18th Field Trip**

**June 18th:** \*\* Jamieson for Bog Wood—Meet @ Rest Stop Idaho/Oregon Border (Ontario Welcome Center) \*\* (meet @ 7am – leave @ 7:30)

Our June trip will be to a place we have not visited in some time that has some beautiful Bog Agate and petrified wood. The trip is to Jamieson Oregon on June 18<sup>th</sup>. We will be meeting @ 7AM and leaving @ 7:30 AM. We will be meeting at the “West Bound Rest Area” on I-84 just over the border of Idaho and Oregon. NOTE: Due to the summertime temperatures, this is the first month, of several, where we will be starting our trips earlier as to combat the heat and take advantage of earlier daylight hours. There will be surface material but some digging tools may be required to get the good stuff that is buried. This is a fairly remote area and 4x4 with average ground clearance is required. Remember to bring a lunch and drinking water. Other things to consider: Protective clothing and sunscreen to avoid burns. Please remember to not park on tall grass or sagebrush as the fire season is in full swing and watch out for snakes.

### **Owyhee Gem & Mineral Society - Field Trips 2022**

**July 23rd:** \*\* Rome for Snake Skin Agate—Meet @ Gem Stop / Chevron (Hwy 55&95)

**Aug 20th:** \*\* Wagon Town for Bog Wood—Meet @ Gem Stop / Chevron (Hwy 55&95)

**Sept 24th:** \* Blue Egg for Blue Opal Thunder Eggs—Meet @ Homedale City Park with Tank

**Oct 22nd:** \* Graveyard Point for agate and Jasper—Meet @ Gem Stop / Chevron (Hwy 55&95).

Legend: \* (meet @ 8am – leave @ 8:30) \*\* (meet @ 7am – leave @ 7:30)

*For further information, Contact Robert (208)590-1848 or Dale (208)283-7990*



### May 21st Field Trip—Pink Plume Claim

Our May outing to the Pink Plume club claim was a fantastic trip, Al Crouch from the Vale BLM fire district came out and did a fire awareness training session and answered everyone questions as well as holding a drawing for some great prizes. I wanted to give a big thank you to Al and his wife for coming out and giving the awareness training. We also had a famous YouTuber (KatyDid Rocks) show up and enjoy an outing with the OGMS group. We had 53 people on the signup sheet and I believe many people went home with some beautiful agate. Dale and I also received several donations to help offset our fuel costs and we want to thank everyone who has donated to date, we really do appreciate those. —Robert

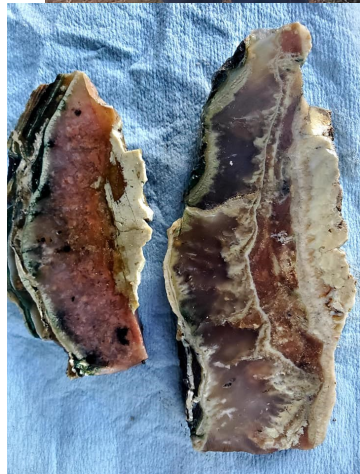


Photo credits: Jeff Hales, Randy Robin. Roxanne Franklin, Rebecca Freeman, John Wright



## June Birthdays

1	Frederick Freeman
1	Red Larson
2	June Eng
3	Judith Hart
4	Isaac Ward
9	Tom Gordon
9	David Korn
11	Rick Fleischman
12	Cheri Gordon
13	Ted Diehr
15	Gerri Smith
16	Charles Anderson
16	Patti Powell
17	Jay Erb
17	Helen Baldwin
17	Janie Ehlers
18	David Butler
19	Corbin Todd
20	Randy Harrison
20	Linda Morgan
20	Judie Shaffer
21	Rick Brose
22	Kathi Larson
23	Christine Deveau
25	David Thomas
28	Rowena Burnum
29	Mary Harris
29	Nick Larson
30	Freda Babbitt

## June Anniversaries

1	Ron & Jean Dingley
5	Jim & Ruth Hopkins
8	Bill & Roxanne Franklin
8	Dennis & Linda Waller
9	Brad & Theresa Larson
11	Kenny & Jessica Rencher
11	Andrew & Christina Wiener
19	Miers & Sandi Johnson
24	Randy & Jodie Harrison
25	Rodger & Marilu Jones
26	Todd & Misty Joyner

## Sunshine Report



Hi, I am Jewels Haines and I am your Sunshine Chair.

If you hear of anyone needing a get-well card or visit, please give me a call at (760) 331-3443.

[jewelsmalia@yahoo.com](mailto:jewelsmalia@yahoo.com)

## The General Meeting for June is at the College of Idaho!

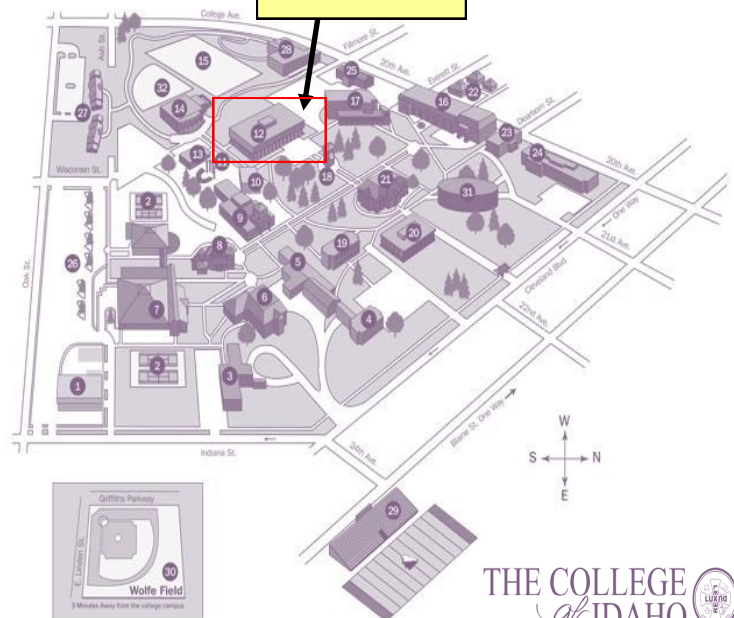
The June 15th General Meeting will be in the Boone Science Hall at the College of Idaho, Room 103.

If you are heading SW on 20th Ave, you will take a left at Filmore St and go through the parking lot to the side entrance of the building.

See you there at 7:00 p.m.

General meetings are the third Wednesday of each month.

**Park Here**



THE COLLEGE  
of IDAHO

**FIRE PREVENTION TIPS FROM THE BUREAU OF LAND MANAGEMENT (BLM)****[Fire Prevention | Bureau of Land Management \(blm.gov\)](https://www.blm.gov)**

Every year, on average, human-caused wildfires account for approximately half of all wildfires in the United States. Though most of these fires are caused by accidents, many of them can be prevented. Preventing human-caused wildfires is really quite simple; people just need to be aware of the most common causes and how to prevent a wildfire from starting:

**Campfires**

Many people love to go camping and enjoy the warmth and light from a campfire. However, campfires turn into dangerous and costly wildland fires because people leave them unattended, or because people build a fire under a tree or near flammable vegetation. Here are some tips to prevent your campfire from turning into a wildfire:

1) Make sure you don't overdo it! Campfires can provide plenty of heat and light with only a few small logs. Avoid piling too much fuel on your fire; keep it under control by only adding one or two small logs at a time. You never know when the wind may pick up a spark from your fire and carry it into dry vegetation and then all of a sudden – whoosh – you have an uncontrollable wildfire.

2) If you leave your campsite for any reason, make sure your campfire is completely out! Douse the fire with at least one bucket of water, stir it, then add another bucket of water and stir it again. Your campfire should be cold to the touch before you leave your campsite.

**Vehicles**

A very significant amount of human-caused wildfires are ignited when people are driving vehicles that haven't been properly maintained or when people drive off of paved roads. Follow these simple tips to avoid starting a wildfire with your vehicle:

-If you are off-roading, remember that your exhaust can reach temperatures of 1000 + degrees! Driving or parking over dry grass often starts wildfires.

-Vehicles can also shoot sparks from their exhaust, particularly vehicles that haven't received regular mechanical maintenance, so make sure your vehicle – whether it's a car, truck, or OHV (off-highway vehicle) – is current on all mechanical checkups and suited for off-road adventures.

-Be prepared - Carry a shovel and a fire extinguisher in your vehicle.

-OHVs must have a spark arrestor, and should carry a shovel at least 24 in long by 6 in wide with a steel blade and a bucket (but a helmet can replace the bucket – or anything that you could use to carry water).

**If you're towing a trailer:**

-Make sure your trailer is roadworthy. Broken down trailers start dozens of wildfires each year. Do a simple maintenance check to make sure the tires are not worn and are properly inflated, the bearings and axles have been greased, and safety chains are in place and not dragging on the ground.

-An annual trailer tune-up is usually less than \$100.00 - well worth it to protect your investment and prevent a wildfire that could cost you thousands of dollars.

-Don't overload your trailer. Be sure to check your rear view mirrors often to make sure your trailer has not blown a tire, causing it to drag and throw sparks that can easily start a roadside fire. Believe it or not, the BLM suppresses wildland fires every year that are caused by trailers.

**Burning Debris**

People often burn trash, leaves, agricultural waste or other materials, but it is illegal to burn many things such as plastics, food trash and trade waste, especially on public lands. If you plan to burn on your private property, make sure your burn barrel or burn pile is placed at least 25 feet away from structures or vegetation and follow these simple tips:

1) Have water (such as a garden hose) nearby, and never burn if it's windy.

2) Once the objective of your burn is completed, be sure to "mop up" the ashes with water and stirring. Wildfires often start from "holdover" debris piles that were not properly extinguished, days or even weeks after they were burned (yes, this does happen; burn piles can still be hot weeks after you've finished burning).

3) If using a burn barrel, place a metal screen spark arrester (with openings smaller than ½ inch) on top of the barrel. This will prevent sparks from flying out of your burn barrel into vegetation, where they can ignite a wildfire.

4) If you are burning debris piles, keep your pile small. A smaller burn pile will dispose of materials in the same manner as a very large debris pile.

5) There may be burning restrictions in your area, so contact your local fire department for more information and debris burning tips.

**Equipment Use**

Many people start wildfires using equipment, such as a chainsaw, grinding tools, welding activities, or other equipment that create sparks. In addition to the above, operator must have fire retardant shield capable of containing all sparks. The equipment operator should designate one person per cutter/grinder as a fire spotter during operation. Make sure you never operate equipment that produces sparks near dry vegetation. Always have a cleared area around your workspace. This area should be even larger if it is windy and very dry. Create clearings where all flammables have been removed. The width or radius of the clearing, in order to be effective, will vary with the nature and size by the risk from 10 to 25 feet.

**2023 Show Dates: "OGMS", March 4 and 5**  
**O'Connor Field House, Caldwell, Idaho**

We find ourselves in need of replenishing our supply of good material for the Silent Auction, polished tumbled rock for the Grab Bags, and small pieces for the Sand Dig.

The 2022 Show also depleted our supply of Rock Critters for the Wheel Of Gems.

If you feel you may have a little time you can donate, please contact me.

Help us think for a great name for our 2023 Rock and Gem Show.

I have been meeting several of our newest OGMS members. Please, at our next meeting, even if we have already met, come up and say Hello. Looking forward to meeting and talking with all of you.

LOOKING FORWARD TO ANOTHER GREAT SHOW...

SHOW CHAIR: Paul Deveau  
(208) 994-8025, [devidaho@q.com](mailto:devidaho@q.com)

CO-ASSISTANT SHOW CHAIRS: Karen & Brian Davis  
(208) 409-8936 [bkdavis76gmail.com](mailto:bkdavis76gmail.com)



**OWYHEE GEM & MINERAL SOCIETY      BOARD MEETING MINUTES**

**There will be no OGMS May Board Meeting due to the Memorial Day Holiday! The Board sends good wishes for a fun, safe holiday to everyone!**

The June General Meeting will be held at the College of Idaho, Boone Science Bldg., Room 103 on Wednesday, 15 June 2022 at 7:00pm.

The June Board Meeting will be held at the Caldwell Public Library at 1010 Dearborn Street, Caldwell, Idaho on Monday, 27 June 2022 at 7:00pm.

Respectfully submitted, Christine Deveau, Secretary



**Orma J. Smith Museum of Natural History**

**College of Idaho— Caldwell, Idaho**

**Hours: Monday—Friday, 12:15 - 5:00 p.m.**

[Orma J. Smith Museum of Natural History | The College of Idaho](#)

As the only natural history museum in the region encompassing southwestern Idaho, southeastern Oregon, and northern Nevada, The College of Idaho's Orma J. Smith Museum of Natural History is the premier resource for environmental and natural history education in the region. The Museum is listed in the "30 Most Amazing Higher Education Natural History Museums," compiled by Best College Reviews.

The Museum is located in the basement of Boone Hall on the College's campus in Caldwell.

You can check them out on [Instagram](#) or call (208)-459-5507.



## Fossil Flora of the Salmon City Formation by Howard Emry

**June's presentation will include this information.**

**Howard is also bringing fossil samples and other items to the June meeting. Don't miss it!**

The **Salmon City Formation** is a [geologic formation](#) in [Idaho](#). It preserves [fossils](#) dating back to the [Paleogene period](#).

The fossil flora of the Salmon City Formation lies in sedimentary deposits exposed along the edges of the Lemhi Valley located in east-central Idaho. On the east side of the valley are the Beaverhead Mountains which separates Idaho from Montana, while the Lemhi Range borders the valley's west side. As these mountain ranges pushed upward during the Eocene Epoch, the adjacent floor of the Lemhi Valley sank in elevation (forming a graben) thereby creating conditions that formed fossil layers of the Salmon City Formation. Today, located at the north end of the Lemhi Valley is the small town of Salmon, Idaho.

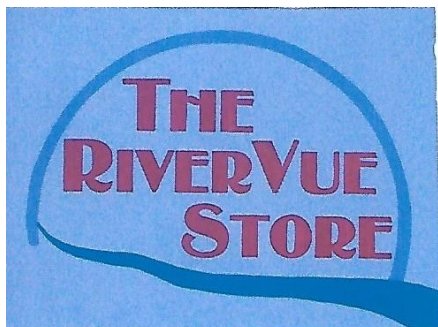
This flora grew during the middle Oligocene Epoch (30.6 million years ago). It represents a deciduous hardwood forest with conifers and dicot (flowering) trees that are similar to species that grow presently in southeastern United States and in eastern Asia. Total precipitation in central Idaho during that time was around 30 inches annually with a frost frequency of about 3% hours per year.

The Salmon City Formation rests unconformably on the late Eocene Challis Volcanics. It is composed of two members: The Mulkey Creek Member exposed in the southern half of the Lemhi Valley, which represents lacustrine (lake) deposits, and the Carmen Creek Member found in the valley's northern region, which is made up of fluvial (stream and river) sediments.

Along the edges of this ancient lake and near the streams and rivers that flowed into it grew super riparian (near water) plants as fern (*Osmunda* sp.), alder maple (*Acer* sp.), willow (*Salix* sp.), sycamore (*Platanus* sp.), Chinese fir (*Cunninghamia* sp.), redwood (*Sequoia* sp.), and dawn redwood (*Metasequoia* sp.). In the drier, upper slopes grew barberry (*Berberis* sp.), pine (*Pinus* sp.), fir (*Abies* sp.), spruce (*Picea* sp.), douglas fir (*Pseudotsuga* sp.), and elm (*Ulmus* sp.).

The Salmon City Flora reflects a change in vegetation from plants that grew in warm temperate to subtropical environments of the Eocene Epoch to those that thrived in the drier, cooler climate of the Oligocene. As climate changes in the future we may have a further change in the environment of Idaho's Lemhi Valley.





**Stone from Arizona**

Anderson Mine—Agate  
Brenda—Agate & Jasper  
Burro Creek—Pastelite & Agate

**Stone from Australia**

Noreena  
Mookite

**Stone from Idaho & Oregon**

Owyhee Picture Jasper  
Green Moss Agate  
Tumbled Stones

Amethyst from Uruguay  
Slabs & Rough  
Hammers/Tools/Gold Pans  
Brazilian Agate

Located at the corner of US 95 & Homedale Road  
26736 Homedale Road, Wilder, Idaho  
Phone (208) 861-8229 or Text: (208) 258-4250  
rivervu1@msn.com  
Open Saturdays 9:00 a.m.—2:00 p.m.  
April—October

**STRINGER'S GEM SHOP**

Idaho Opals  
Picture Jaspers & Plume Agate  
Rough Rock and Slabs  
Bolos & Buckles  
Bookends & Specimens  
Tumblers & Equipment  
Grit and Polish

**W.A. (Bill) Stringer**

1812 West Orchard  
Nampa, Idaho 83651

Halfway between Midland and Middleton Roads

**(208) 466-5169**

M-F 1:30-5:30 pm, Saturday 10 am—2 pm

Check this website for more info:  
**[www.stringersgemshop.com](http://www.stringersgemshop.com)**

**Would you like to see your ad here?**

You can buy an ad like these for one month for only \$5.00.

A 12-month ad is only \$50.00!

Your ad will be seen by over 200 club members, plus online visitors.

To place an ad, please email:  
[denisemstringer@gmail.com](mailto:denisemstringer@gmail.com)

**Earth Brite**

**Rock & Gem Shop**

Brightening homes with stones and crystals from all over the world.  
Charlene & Kurt Branham

3506 Cleveland Blvd  
Caldwell, ID 83605

Mon thru Fri: 11 a.m.—6 p.m.  
Sat thru Sun: 10 a.m.—4 p.m.

(208) 475-4550  
[honeyonyx1@gmail.com](mailto:honeyonyx1@gmail.com)  
[www.ebrockshop.com](http://www.ebrockshop.com)

2nd location: 112 Fairview Ave, Meridian

RENEWAL	NEW	CASH	CHECK #	RECD BY
---------	-----	------	---------	---------



Owyhee Gem & Mineral Society  
PO Box 1053  
Caldwell, ID 83605-1053

**Owyhee Gem and Mineral Society Purpose:**

To promote interest in the wonders of nature and in particular, rocks, gems, minerals, and fossils.  
To conduct field trips for exploration and collection.  
To encourage as wide a participation as possible in the "Rock Hound" hobby and the many activities that go along with it.

**MEMBERSHIP DUES:**

**Family** - \$20.00 per year

**Couples** - \$18.00 per year

**Singles** - \$12.00 per year

**Children (under 19)** - \$3.00 per year

The Owyhee Gem and Mineral Society was established in 1938 at the College of Idaho in Caldwell, Idaho.

**GENERAL MEETING:** The club meets the third Wednesday of each month at 7:00 P.M. in the Boone Science Hall at the College of Idaho, Room 103, except for the July picnic and the December holiday party.

Bring a friend—Wear your name tag— Bring an unidentified rock and we'll help you figure out what it is!

**FIELD TRIPS:**

Field trips are scheduled once a month.  
Visitors are welcome at all these events!



**Have You Visited our Club Website?**

Our awesome website has great information on it. There are some great pictures of our outings, and our newsletter is posted on it. Brad Larson, our Web Master, does a great job of keeping it up to date with all kinds of information like upcoming shows, field trip dates, times and much more.

***<http://www.owyheerocks.com/>***