



# Owyhee Gem



# Owyhee Gem & Mineral Society

P . O . B O X 1 0 5 3 C A L D W E L L , I D A H O 8 3 6 0 5 - 1 0 5 3

## Board of Directors

### **PRESIDENT:**

Willa Renken 362-3941

### **VICE-PRESIDENT:**

Judy Tucker 880-7100

### **SECRETARY:/sunshine**

Sylvia Foreman 459-4554

### **TREASURER:**

Janie Ehlers -674-1213

### **FEDERATION DIRECTOR:**

Ed Moser 340-8060

### **FIELD TRIP CHAIRMAN:**

Larry Beattie 466-6184

ASST: Gene Alvey 440-3067

### **SHOW CHAIRMAN:**

Susan Beattie

### **ASST. Chairman**

Darell Ehlers -674-1213

### **BULLETIN EDITOR:**

Joan & Gene Alvey 409-2410

E-mail fosselmoss@msn.com

## **COMMITTEE CHAIRS**

### **MEMBERSHIP:**

Neava Haney 899-1519

### **HISTORIAN:**

Pauline Prather 459-4139

### **REFRESHMENTS:**

Mike Tucker 880-7100

### **ROAD CLEAN-UP:**

Gene Alvey 468-3067

Wow it is October already. Can you believe it? That means this month you vote for the Board of Directors you want to direct the club in 2013. We have a great slate of officers ready and willing to serve you all. Please don't forget if you would like to be considered you have the ability to be nominated from the floor. I hope you will all be there paid up and ready to vote.

Judy Tucker has made arrangements with David Johnson to have one of the exhibit rooms open for our program this month. It will start at 6:30 pm so you can all get to see the exhibits. David and Allan have done a great job restoring & labeling these pieces so it is always fun to see material we may or not have the availability to collect.

Larry Beattie has been hard at work setting up this month's field trip to Texas Springs to collect pink wood among other things. If you have not gone to this collection site it is really a fun place to explore and collect in. Not to mention it is in driving distance to Jackpot where you can try your luck at winning a dime or two.

Remember all you singles it is October and that means doughnuts and cider for refreshments. We also hope that everyone is trying to take a turn at bringing refreshments each month so we all can share the expense. It is a fun time to get to catch up on what our friends are up to each month.

The only other item of information is that we have December 19<sup>th</sup> reserved for our Christmas dinner at Orphan Annie's so be sure to get your tickets from Susan Beattie so we can have a head count by the 7<sup>th</sup> of December. Member tickets will be \$7.25 as the cost has gone up by a dollar. Nonmembers will be \$14.50 this year for those who would like to bring a guest. This is always a great way to celebrate our end of year so I hope you all will consider coming and sharing a special evening together. Hope to see you all at the meeting until then I hope you all get a chance to enjoy the fall colors and find that last exceptional find of the year.

*Willa Renken*

**OWYHEE GEM & MINERAL BOARD MINUTES  
2012****SEPTEMBER 24,**

Present at the OGMS Board Meeting September 24, 2012 were Willa Renken, Janie & Darell Ehlers, Larry & Susan Beattie, Ed & Deanna Moser, Neava Haney, Pauline Prather, Bill and Sylvia Foreman.

**BOARD MEETING:** was called to order by President Willa Renken at the College of Idaho in room 106 at 7pm. Willa asked if there were any changes to the minutes as printed in September newsletter. No changes to be made. Ed Moser made motion to accept the minutes as printed 2<sup>nd</sup> by Pauline Prather and approved by the board.

**SECRETARY:** Sylvia Foreman had nothing to report.

**VICE PRESIDENT:** Judy Tucker was not present.

**TREASURER:** Janie Ehlers had nothing to report.

**EDITOR:** Joan Alvey was not present.

**SHOW CHAIRPERSON:** Susan Beattie says show plans coming along fine.

**FEDERATION CHAIRMAN:** Ed Moser encourages us to keep saving stamps for Cancer Research and suggest that we read the Northwest Newsletter for information and the shows listed on the back page also if you receive the Rock & Gem Magazine it has gem show, (places, dates and times).

**HISTORIAN:** Pauline Prather had nothing to report.

**SUNSHINE:** Sylvia Foreman had nothing to report.

**MEMBERSHIP:** Neava Haney presented the new name badges to the Board.

**FIELD TRIP CHAIRMAN:** Larry Beattie reported that the field trip to McDermitt was a great trip.

The October field trip will be to Texas Springs and this will be an overnight trip.

**WEB REPORT:** Brad Larson was not present.

**OLD BUSINESS:** October meeting is time to vote for OGMS Officers for 2013 and you must have your membership dues paid in order to vote.

ROAD CLEAN-UP will be October 13, meet at Walter's Ferry Bridge at 9am ready to work at 9:30am.

**NEW BUSINESS:** Willa Renken presented a quote on the Black Light Room for Show to the board members which will be presented to the general meeting for approval.

The board discussed making some of our long time members Honorary Members of Owyhee Gem & Mineral Society. Ed Moser made motion to recognize our honorary members 2<sup>nd</sup> by Larry Beattie and approved by the Board. The board also discussed the case favors for the 2013 Show.

**BOARD MEETING ADJOURNED 8:45PM**

sfs

**OWYHEE GEM & MINERAL SOCIETY****SEPTEMBER 19, 2012**

**GENERAL MEETING:** held at the College of Idaho in room 103 was called to order by President Willa Renken at 7:30pm. Willa Renken asked if there were any changes to the minutes as printed in the September newsletter. There were no changes to the minutes as printed. Ed Moser made motion to accept minutes as printed 2<sup>nd</sup> by Judy Tucker and approved by general meeting

**EVENING ACTIVITY:** We did not have a program for the evening.

**GUEST:** There was one guest for the evening and he became a member of Owyhee Gem.

**SECRETARY:** Sylvia Foreman had a Show flyer from the Mt. Home rock club to report on.

**VICE PRESIDENT:** Judy Tucker had nothing to report.

**TREASURER:** Janie Ehlers was not present.

**EDITOR:** Joan Alvey was not present.

**SHOW CHAIRMAN:** Susan Beattie had suggestions for the Show Theme on the black board for members to vote on. ("**LET US ROCK YOUR WORLD IN 2013**") was chosen.

Susan reported that Red Larson will be in charge of the Silent Auction for the show.

**FEDERATION CHAIRMAN:** Ed Moser encourages us to keep saving stamps for Cancer Research and to be sure and read your Northwest Newsletter, and on the back page of it there are Shows with places, dates, and times that you might like to attend.

**HISTORIAN:** Pauline Prather reported to the members that October is the month for those who are SINGLE to furnish the Doughnuts and Apple Cider (refreshments, etc.) for the evening. Pauline also ask everyone to please take their turn at bringing the refreshments once a year as this makes it fair for all and provides us with the needed refreshments each month.

Betty Knapp, member of yesterday, submitted a poem to the editor years ago. Pauline read it to the members. (SMILE AWHILE, TODAY I'M 90)

**SUNSHINE:** Sylvia Foreman reported she had sent a Sympathy Card to Velma Knapp's family.

**MEMBERSHIP:** Neava Haney introduced a new member. Pauline Prather made motion to accept the new member 2<sup>nd</sup> by Kathi Larson and approved by members.

**FIELD TRIP CHAIRMAN:** Larry Beattie reports the September field trip will be to McDermitt, -- meet at McDermitt motel at 9am Mountain time and 8am Pacific time.

**WEB REPORT:** Brad Larson was not present.

**REFRESHMENTS:** Mike Tucker thanked September cookie crew and the singles will be the refreshment crew for October.

**OLD BUSINESS:** next month (October) will be elections of Officers for OGMS for 2013.

ROAD CLEAN-UP (Gene Alvey, in charge) meet at Walter's Ferry Bridge at 9am leave at 9:30am for work.

**NEW BUSINESS:** Christmas party will at Orphan Annie's Restaurant in Caldwell, where it was last year. It was discussed and decided that we would all bring a gift to exchange and Kathi Larson will be in charge of dispersing the gifts, Rosemary Peterson will be in charge of the center pieces, and Susan Beattie is in charge of selling the dinner tickets.

**SLAB DRAWING:** Mike Tucker helped Willa with the pulling of slab tickets from the can.

Door prize won by Susan Beattie donated by Lilli Rogers.

**MEETING ADJOURNED and REFRESHMENTS enjoyed by all.**

sfs.

**STAMPS**

Bring your Postage Stamps to this months meeting.

Remember to *cut ½ inch all the way around the stamp.*

Give them to me at the OGMS meeting.

The money raised will go to help support **CANCER RESEARCH.**

Hey there folks did you happen to find any of those special stamps. Remember they are on your news letters so please keep your eyes opened and remember to save them and bring the to the next club meeting . Keep looking they may show up again so remember to keep your eyes peeled. Leave a t least a 1/2 inch space all the way around the stamp.

thank you all for this it dose

help others and it might just

Help some one you might know..

Ed Moser Federation Director

way around . Thanks for all your help it is for a great cause.

I sent out a Sympathy card to Velma Napps family do to her

Passing but we had No reports of anyone needing a get well wish.

Remember if you hear of anyone needing a phone call, get well

wish or hopefully not but a sympathy card just give me a call 459-4554



# Happy Halloween to all you Ghost and Goblins

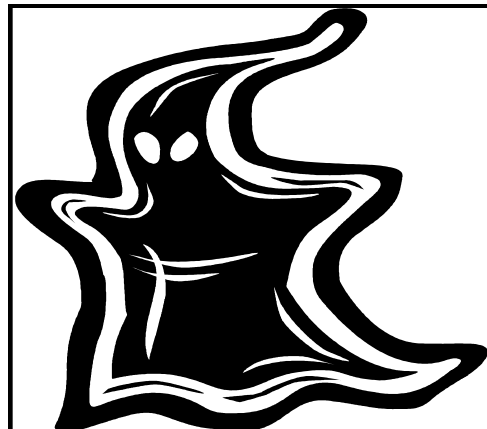
## Big News and Information

Please Read !!!!!!!

Hi there all you fellow Club Members.

Just would like to let you know what we will be doing for the entertainment this month. We will start early at 6:30 on the 17 we are being honored by the ability to view a collection of rare and fantastic MATERIL in one of the rooms at the college. Like I said the doors and tour will begin at 6:30 so come early. We can give a small donation if we wish this helps afford the ability of the specimens to be made available to us to view.

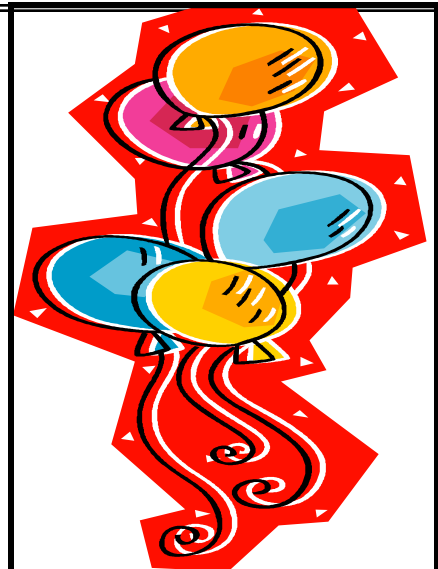
Vice President Judy Tucker



Happy Birthday	
Mark Bramble	10/14
Neva Haney	10/10
Dee Huntley	10/16
Brad Larson	10/29
Pat McConnell	10/21
Charles Murphy	10/30
Celia Quignon	10/1
Dan Stevens	10/30
Dib Stowell	10/12
David Strum	10/23
Dennis Waller	10/26

Happy Anniversary	
Gene & Joan Alvey	10/7

James & Janice Tietz	10/27
Helen Weber	10/20



### *September Field Trip to McDermitt*



A small but eager group of rockhounds met in McDermitt, Nevada for a fun weekend searching for rock treasures! Eleven members and six friends from California came together to search for thundereggs, petrified wood, Gary green, wonderstone, chicken tracks, and agate.



The **October field trip** will be to Texas Springs, Nevada. This trip will be a joint venture with the Idaho Gem Club. We will meet in front of the Horseshu Casino in Jackpot, Nevada at 8:00 a.m. Mountain time, Saturday, October 20, 2012. If you need more details please attend the meeting or call Larry Beattie before the meeting. Hope to see you there!

**Hey guys here is just a few bits and pieces of information you might be interested in.**

Dues are due don't forget if you want to vote for your up coming officers your dues must be paid. Singles \$12.00. Couples & 18.00, Family \$20.00 and juniors (18 and under) \$3.00. If you have someone in mind for a certain office this meeting will be the time to from the floor nominate them, cause at this meeting we will be VOTEING for our 2013 board of officers.

December is approaching and that means our Christmas Dinner is also coming up real soon so that means you also want your dues paid so you can attend this great event. We always have a great time at this party and the food has been exceptional. So get in touch with Susan Beattie and get your tickets we have to have the final count by December 7<sup>th</sup>.

### Jasper or Agate

Jasper and agate are the rocks we hobbyist deal with most often in pursuit of our goals as lapidaries and collectors. Do we really understand the difference between the two?

Both Jasper and Agate are composed of extremely fine interlocking quartz crystals called cryptocrystalline quartz. As such, they are both members of the fine-grained quartz family referred to as chalcedony. Chalcedony occurs through-out the world in beds, bands, nodules, geodes, betryoidal masses, as a replacement of fossils, wood tissue or other minerals, and as a cementing material. It is deposited from silica-rich waters, often carrying other impurities.

It is the presence of these minerals impurities which stain the micro-quartz grains to produce the wide variety of the colored pattern, banding effect and inclusions that differentiate the basic "gems" forms of cryptocrystalline quartz- jasper and agate-from ordinary drab chalcedony.

In general, agate is a transparent to translucent form of chalcedony in which the coloration takes the form of regular bands, rings, clouds, wispy inclusions or distinct groups.

Jasper, on the other hand, can be somewhat translucent, but it is most often opaque...with color usually much darker than agate and ...totally random with respect to distribution and pattern.

David Olsen via El Monte Gem Scoop

Via Gems of the Rogue

Via Golden Spike News

### SHOP HINTS AND TIPS

If soft material sticks to the buff when polishing, try using vinegar instead of water.

Sagenite should be worked with the inclusion lines not across them.

Via Rock Rollers, Via Golden Spike News



# Rock -N- Gifts

942 South Lincoln • Jerome, Idaho 83338  
(208) 324-8860

**Bruneau Jasper**

Cabs - Slabs - Specimens - Rough

Gerald & Joy Scarrow  
(208) 324-4024

Rocky & Kelley Scarrow  
(208) 324-1034

rockingift@cableone.net



## STRINGER'S

GEM SHOP

Idaho Opals

Picture Jaspers & Plume Agate

Black Hills Gold & Silver

(Landstrom's & Stamper)

Bolos & Buckles

Bookends & Specimens

Birthstone Jewelry

Tumblers & Equipment

WHITES METAL DETECTORS

W.A. (Bill)

& Anna Stringer

1812 West Orchard

Nampa, Idaho 83651

1 Mile South of Karcher Mall

(208) 466-5169

M-F 1:30-5:30 pm

Other Hrs. By Appointment

### Hey Members it is time for our ROAD CLEAN UP!!!!!!!

Next month it will be time for Road Clean-up

**DATE..... October the 13,212**

**TIME..... Meet at 9 0 clock am leave at 9:30am**

**Where..... Walters Ferry in parking lot**  
Ater work is done we will be going on a rock hunting trip.

Please volunteer the more the merrier and the less work for all of us who show up. Besides a good time is had by all who come out and help.

Sign up sheets will be at the September meeting..

Thank you Gene Alvey Chairman





**Owyhee Gem & Mineral Society****Membership Report**

It is October, and that means it is time to renew our Cub membership! Dues are \$20.00 for a family, \$18.00 a couple or \$12.00 for singles. Children (18 and under) \$3.00 each. You will find the membership form attached and you can either bring it to the next General Meeting or mail it in to PO Box 1053, Caldwell ID 83605-1053.

October is also the month, the membership will be voting on the Officers for 2013. In order to participate you must be present and dues paid.

If you have not received your name badge and/or membership card, my contact information is listed below. Please contact me either by phone or email so I can have it ready for you at the next meeting.

Reminder: You get with “New Membership” – A membership card, a small patch and your name badge at no charge. With your “Renewal” you will get your membership card for the New Year. (Usually you can pick up your name badge at the next club meeting while enjoying refreshments and meeting new friends after the meeting)

We have had some inquires for replacement of Name Badges or small patches that have gone astray. You can purchase the Name Badge for \$2.00 and/or the small patch for \$3.00 each. We also have the big patches for \$10.00.

Remember to wear your name badge so everyone knows who you are.

Neava Haney 899-1519  
wehnjh99@cableone.net

**Purpose:** To promote interest in the wonders of nature and in particular, Rocks, Gems, Minerals, and Fossils. To conduct field trips for exploration and collection. To encourage as wide a participation as possible in the “Rock Hound” hobby and the many activities that go with it.

**MEMBERSHIP DUES:**

**Family— \$20.00 per year**

Couples - \$18.00 per year

Singles - \$12.00 per year

(18 and under)

Children - \$3.00 per year

The Owyhee Gem and Mineral Society was established in 1938 at the College of Idaho in Caldwell.



**GENERAL MEETING:** The club meets the third Wednesday of each month at 7:30 P.M. in the Boone Science Building at the College of Idaho, except for the July picnic and the December party. Field trips are scheduled once a month. Visitors are welcome at all these events!

Bring a friend—Wear your name tag  
Bring an identified slab



Joan & Gene Alvey  
94North 29th Street  
Nampa, Idaho 83687

