



# "Owyhee Gem"



## Owyhee Gem & Mineral Society

P . O . B o x 1 0 5 3 C a l d w e l l , I d a h o 8 3 6 0 5 - 1 0 5 3

### BOARD OF DIRECTORS

**PRESIDENT:** Willa Renken  
(208) 362-3941, Wlr\_dkr@msn.com

**VICE-PRESIDENT:** Jim Hopkins  
(208) 466-8817,  
16654JRHopkins@q.com

**SECRETARY:** Debbie Lawrence  
(208) 869-7585, dlaw5@earthlink.net

**TREASURER:** Michele Wiles (208)  
870-5153, mwilemail@yahoo.com

**FEDERATION DIRECTOR:** Ed Moser  
(208) 340-8060,  
edmoser15@gmail.com

**FIELD TRIP CHAIRMAN:** Dale  
Rawson (208) 283-7990

**ASST.** Pat Kirkpatrick (503) 849-5822

**SHOW CHAIRMAN:** Susan Beattie  
(208) 466-6184, susan.ebt.pg@gmail.com

**ASST. SHOW CHAIRMAN:** Darell  
Ehlers (208) 674-1213,  
ddehlers@fmtc.com

**BULLETIN EDITOR:** Carol Farnham  
(208) 475-4868  
carolfarnham@ymail.com

**HISTORIAN:** Pauline Prather  
(208) 459-4139

**MEMBERSHIP:** Kim Bashford  
(208) 454-7287,  
kmcewan1957@msn.com

**ROAD CLEAN-UP:** Larry Beattie  
(208) 466-6184, lbeattiejr@aol.com

**SUNSHINE:** Jewels Haines  
(760) 331-3443,  
jewelsmalia@yahoo.com

**WEBMASTER:** Brad Larson  
ogms.webmaster@gmail.com

### October President's Message

How fast summer turns into fall. It just seems like yesterday we were basking in the heat and now it is turning into jacket weather. Each month brings us closer to our Annual Show date so Susan wanted us to know Brad has updated the website so you can print out your showcase application at any time. Congratulations to David Baldwin for volunteering to chair the basket raffle this year. As you go through out the rest of the year if you know of, or run into a business (be it big or small) that would like some advertising at our show all they need to do is donate some items that reflect their business and we will build a raffle basket showcasing their items. Your ideas and referrals will help David in achieving his goal as our raffle chair.

At our Board meeting it was discovered that the November auction falls the night before Thanksgiving. Therefore, the Board felt that we should hold the auction this month (October) so those who might be going out of town would get to participate in it. That being said please bring your auction items this month (October) and Ed will head up our auction again this year. This is always a fun evening so be sure to bring something to donate and your checkbook to participate. Since we will be holding an auction we will not have a slab drawing again until January.

Please fill out your membership renewal slips that have been printed in the newsletter as your dues are due this month. Kim will be collecting money from you or you can send it to the PO Box. In the off chance we will need to vote on the new board members you will need to be current on your dues to participate.

Larry Beattie has our October roadside cleanup all organized and ready to go. If you can help out in this event it usually only takes about an hour or so to walk the roadside we have been assigned. It will be on October the 27<sup>th</sup> meeting at Walter's Ferry boat dock at 9am. There will be refreshments after and usually a mystery field trip will be in store for those of you who participate. I also would like a report on who finds the most unique item during the pickup!

This month's field trip will be to Haystack Butte. Dale will be meeting you at the park in Homedale near the tank at 8am leaving at 8:30am on the morning of October the 20<sup>th</sup>.

Once again, remember our **Annual Auction is on October the 17<sup>th</sup> this year.** See you all then!

Willa Renken OGMS President

## 2018 Owyhee Field Trip Schedule

**October 20<sup>th</sup>** Haystack Butte for Red Jasper (Meet at Homedale, ID, Park where the Tank is just East of the Four Corners at 8:00 AM, Leave at 8:30 AM).

### USEFUL ITEMS TO BRING ON YOUR TRIP

Buckets, Shovels, Rock Hammer, Pick (Large and a Small one), Sieve, Gloves, Spray Bottle for Water, Small Scrub Brush, Knee Pad's, Magnifier, Plenty of Drinking Water, Food, Appropriate Clothing, Protective Eyewear, Sun Protection, Day Pack or Back Pack, Umbrella, Pry Bar, Fire Extinguisher, tick spray. (Shovel and fire extinguisher to put out any fires that may start.)

**For Field Trip Information**, contact Dale Rawson (208) 283-7990.  
Asst. Chair: Pat Kirkpatrick (503) 849-5822

Trips can last most of the day. Generally, a High-Clearance vehicle and sometimes 4WD or an ATV is required. **Remember, when you are finished, fill in all holes that are dug at the Site.**

**ALL FIELD TRIPS ARE SUBJECT TO CHANGE DEPENDING ON THE WEATHER AND ROAD CONDITIONS.**

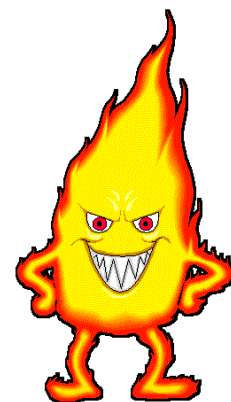
## DUES ARE DUE

Please use the form in this newsletter to continue your membership. You can vote in October if your membership is paid up. Just give the completed form to Kim with your money or mail it to the address in the membership report that is above the form.



## DUES ARE DUE

Be careful while you are collecting in the field. The fire danger is still HIGH. Be safe.





**October Birthdays**

- 9/14 Andrea Sawyer
- 10/1 Celia Quignon
- 10/3 Russ Horsch
- 10/6 Brian Newman
- 10/8 Courtney Gonzalez
- 10/11 Barbara Kerbs
- 10/11 Vickie Wise
- 10/13 Dennis Fulk
- 10/14 Marilyn Troyer
- 10/16 Betty Brown
- 10/16 Harry Erichson
- 10/16 Dee Huntley
- 10/19 Chris Skidgel
- 10/20 Bill Sawyer
- 10/21 Pat Mcconnel
- 10/22 Jenny Stinson
- 10/23 Chuck McGuire
- 10/26 Dennis Waller
- 10/29 Sandi Johnson
- 10/29 Brad Larson
- 10/30 Aubrey Kopp
- 10/30 Dan Stevens
- 10/31 Grey Blodgett
- 10/31 Mike Veneziano

Opal & Tourmaline have become the staple birthstones of October. Opal and Tourmaline are both some of the most beautiful and untraditional of all gemstones. Traditionally represented as pink, the tourmaline can come in many colors of the rainbow. Even seen with 3 colors in one stone, known as tri-colored.

**October Anniversaries**

- 10/7 Gene and Joan Alvey
- 10/17 Lorena and Ray Roberts
- 10/20 Howard and Linda Roose
- 10/22 Robert and Sharon Clemens
- 10/25 Michael and Virginia Becker



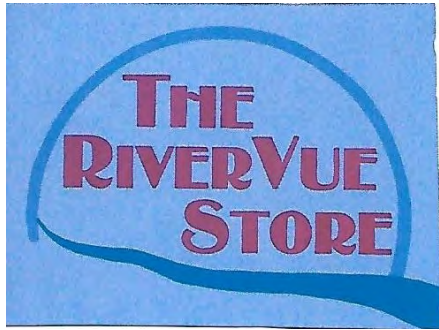
**Sunshine Report**

Hi, I am Jewels Haines and I am your Sunshine Chairman. If you hear of anyone needing a get well card or visit, please give me a call at

760-331-3443

-Jewels Haines,  
Sunshine Chairman





**Stone from Arizona**

Anderson Mine—Agate  
Brenda—Agate & Jasper  
Burro Creek—Pastelite & Agate

**Stone from Australia**

Noreena  
Mookite

**Stone from Idaho & Oregon**

Owyhee Picture Jasper  
Green Moss Agate  
Tumbled Stones

Handmade Jewelry  
Slabs & Rough  
Hammers/Tools  
Brazilian Agate  
- Slabs and Rough

Located at the corner of US 95 & Homedale Road  
26736 Homedale Road, Wilder, Idaho

**By appointment only:**

Phone (208) 861-8229 or Text: (208) 258-4250  
rivervu1@msn.com

**STRINGER'S  
GEM SHOP**

**Idaho Opals  
Picture Jaspers & Plume Agate  
Rough Rock and Slabs  
Bolos & Buckles  
Bookends & Specimens  
Tumblers & Equipment**

**WHITE'S METAL DETECTORS**

**W.A. (Bill) Stringer**  
1812 West Orchard  
Nampa, Idaho 83651

1 Mile South of Karcher Mall  
**(208) 466-5169**  
**M-F 1:30-5:30 pm**

Other Hours By Appointment



**2019 Slate of Officers**

**President:** Willa Renken

**Vice President:** Roxanne Franklin

**Secretary:** Debbie Lawrence

**Treasurer:** Michele Wiles

**Show Chairperson:** Kathy Larson

**Asst. Show Chairperson:** Darell Ehlers

**Editor:** Carol Farnham

**Fieldtrip Chairperson:** Dale Rawson

**Asst. Fieldtrip Chairperson:** David Baldwin



**Would you like to see  
your ad here?**

You can buy a 1/4 page ad, rock & hobby related, like this for one month for only \$5.00.

A 12-month ad is only \$50.00!

Your ad will be seen by over 200 club members, plus online visitors.

To place an ad, please email:  
carolfarnham@gmail.com

## October and the Fall Roadside Cleanup are Here!

October is here and the OGMS Fall roadside cleanup is scheduled for Saturday, October 27<sup>th</sup>. This is a great way to get out on a Fall day and give back to the community that supports us! It's not hard work and it's a good opportunity to get to know other members of the club.

We will meet at the Walter's Ferry boat ramp, on Highway 45, at 9:00am for the cleanup. If the weather is good, we will go on a little field trip after we are finished.

We need a minimum of 12 volunteers, but the more we have, the more fun it is and the quicker we will get done, so we can go play! I will have a signup sheet at the meeting in October but feel free to give me a call or email me (sorry, you can't text me, believe it or not, I don't have a cell phone!) to add your name to the list any time. Due to the nature of the cleanup work, and the proximity to the highway, we don't recommend small children be brought on the cleanup.

Thank you for your support in this effort!

Larry Beattie  
208-466-6184  
[lbeattiejr@aol.com](mailto:lbeattiejr@aol.com)

## Orma J. Smith Museum of Natural History

The Orma J. Smith Museum of Natural History features specimens representing the Biology and Geology of SW Idaho, SE Oregon, and northern Nevada. The focal point of the museum is the Evans Gem and Mineral Collections. The museum hosts a workday and seminar the first Saturday of every month.

The Museum is open to all visitors:  
Monday-Friday from 1-5 pm,  
the first Saturday of every month from 8-5 and  
the third Saturday of every month from 10-4.

The Museum is located in the basement of Boone Hall on the College of Idaho campus. Visit the Museum website at [www.collegeofidaho.edu/cultural-institutions/orma-j-smith-museum-natural-history](http://www.collegeofidaho.edu/cultural-institutions/orma-j-smith-museum-natural-history) to learn more.

### **Federation Director**

Please save the postage STAMPS for cancer research and bring to this months meeting. Remember to **cut ½ inch all the way around the stamp**. Thanks to all for your help. It helps others and it might just help someone you know.

**Federation Director**-Ed Moser,  
(208) 340-8060,  
[edmoser15@gmail.com](mailto:edmoser15@gmail.com)





## Show Report

**Thank you for all your donations!!!**

**We have awesome donations for grab bags, Sand Dig polished rocks, and silent auction material.....Keep it coming.**



We will start **signing up for the 2019 show time slots** at the **January** meeting. **PLEASE** help the venue chairs by *signing up to work for two hours* at each venue. **WE NEED YOUR HELP!!**



### Venue Volunteers Needed

**Chili Feed**

**Showcases**



Front Door—Carol Farnham—208-475-4868

Wheel of Gems—Chris Rawson—208-371-7639

Sand Dig—Jody Atwood—801-791-7228 or 208-697-8166

Silent Auction—Don Dixon—208-908-3374

Membership Ambassador—Jeri McClarin

Grab Bags—**To Be Announced**

Demonstrators—Willa Renken—208-362-3941

Show Cases—**VACANT**

Resource/Door prize Table—Kim Bashford—208-454-7287

Chili Feed—**VACANT**

Theme Raffle Baskets—David Baldwin—208-570-9781

**Please let David know if you can help to solicit donations from local businesses for our new Theme Raffle Baskets venue. I know he would really appreciate it and a little help from a few people goes a long way!**

**OWYHEE GEM & MINERAL SOCIETY GENERAL MEETING MINUTES**  
**September 19, 2018**

The General Meeting at the College of Idaho, Caldwell was called to order @7:30pm by President, Willa Renken. Jim Hopkins' motion with Roxanne Franklin's second to accept the prior minutes, passed.

**Secretary:** Since Debbie was not present, Kathi Larson agreed to take minutes.

**Vice President:** Jim introduced the informative speaker for the evening, Dale Brown. Dale talked about shortcuts in tumbling, Genie arm rests, and Genie fan belt fixes. He also suggested some money-making ideas for our show and had samples of Serpentine and Jasper collected at "low tide". Lots of information! Jim said he has some good DVDs that can be shown at later meetings.

**Guests:** There were five guests introduced to the club members.

**Treasurer:** Michelle reported there were no deposits, bills were paid, and accounts are in good shape.

**Show Chairman:** Willa reported for Susan that the show information is on our website. David Baldwin will chair our auction "baskets". Members were asked to give suggestions for the "basket" themes. Darell has started advertising and asked for more advertising site ideas. The venue rental agreement will soon be signed with the City of Caldwell. Keep tumbling, collecting for Wheel of Gems, and adding to our Silent Auction. Our theme will be "BLUE SAPPHIRES".

**Federation Chairman:** Ed reminded everyone to save their stamps for Cancer research. He received a letter from BLM saying Murphy Flat Road is being improved. The NW Federation meeting in October has no business that needs to be voted on, so he will not be attending for the club.

**Historian:** Pauline reported she has nothing new.

**Sunshine:** Jewels reported she sent a card to Joan Alvey for her surgery and will be sending to another member who is not well.

**Membership Chairman:** Kim reported that we have one new member. She reminded everyone that the yearly DUES ARE DUE, so to please get your dues in to her.

**Field Trip Chairman:** Dale Rawson reported that he didn't find much at Oreana. He brought some samples of what he found. They'll meet at Walter's Ferry this Saturday @ 8am & leave @ 8:30am.

**Unfinished Business:** A Vice President candidate is still needed for our election roster next month. Roxanne Franklin volunteered for the position. Roadside Clean-up will be October 27th. You can sign the sheet at the desk or contact Larry Beattie.

**New Business:** Rocks in the trailer need to be washed before the show. This will happen Sept 29th @10am - at Darell Ehler's home. The Christmas Banquet was agreed to be held at Orphan Annie's. The club will pay 1/2 of each member's meal. Chris Rawson will decorate the tables. The optional gift exchange has a \$20 limit. Meeting Room Rental - The contract for the Orma J. Smith meeting room states it is reserved for OGMS on our regularly scheduled meeting nights for no charge. Bill Stringer has equipment for sale. The Door Prize was won by Michele Munson.

After all business was concluded, the meeting was adjourned.

Respectfully submitted by Kathi Larson for Debbie Lawrence.

**OWYHEE GEM & MINERAL SOCIETY BOARD MEETING MINUTES**

September 24, 2018

The board meeting was held at the Caldwell Library and called to order at 7pm by president Willa Renken. The previous minutes were read and approved.

**Secretary:** absent.

**Vice President:** Jim Hopkins thanked everyone for their help this past year in getting programs scheduled for the meetings.

**Show chairman:** The website is updated with the showcase applications. We discussed having receipts ready for those that donate to the Theme baskets since the donations will be tax deductible.

**Federation Report:** Hells Canyon Show is coming up. Ed will drop in but there will not be anything to vote on. Ed Moser will fill the display at the Caldwell Library in December but someone in the club will need to fill the display in January.

**Membership:** absent.

**Field Trip Chairman:** Everyone had a great time and found a lot of bits and pieces. Someone found a nice pinecone. Next trip will be to Haystack Butte for Red Jasper. Next Field Trip Assist. Chair to be: David Baldwin.

**Old Business:** Room meeting will be free to us. The museum has the use of the room and will hand it over to us for our meeting nights.

**New Business:** The auction scheduled for the November General Meeting will be upped to October since the November meeting is scheduled Thanksgiving Eve. We will need to have a vote in October as to whether we have a November meeting. We need to send out newsletters asap to alert everyone and then email them again about the 10<sup>th</sup> as a reminder.

No slab drawings until January.

Meeting adjourned at 8:10pm

Respectfully submitted – Carol Farnham

**Attention Alert**

**The auction we normally have in November is to be held at the October meeting. Please get our projects completed since it is a month early. In October the club will vote on whether to have our November meeting or not. Since it is Thanksgiving Eve, many people may be in route to or preparing for their Thanksgiving meal.**

**Since there is a good chance we may not have a November meeting, please bring your payment for the Christmas Dinner to the October meeting. Michelle Wiles will be taking your money for the dinner. Willa will let you know how much it will be in October.**



## Membership Report

### **We are accepting payment of 2019 dues**

Membership forms are available at every meeting. Invite your "rockhound" friends to our next one!

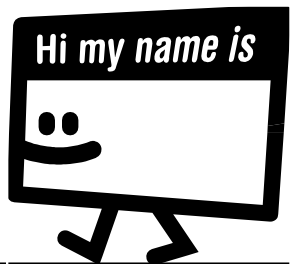
Any member needing a name badge, membership card, or patch, please call me so I can have them ready for you to pick up at the next meeting.

If you need a "replacement" of any of these, there will be a nominal charge of \$2 for the Name badge and \$3 for the Small patch. In addition, large patches are available to members for \$10.

Please remember to **wear your name badge to the meetings**, as it makes it so much easier to identify you.

Your yearly dues cover membership privileges from October 31st through the following October 31st .

You can either pay at a meeting or by mailing the form below to:



**P.O. Box 1053, Caldwell, ID 83605-1053**

**Kim Bashford, Membership Chairperson**

**Phone: (208) 454-7287**

**Email: kmcewan1957@msn.com**

**PAY YOUR DUES NOW SO YOU CAN VOTE  
AT THE OCTOBER MEETING.**



### **OWYHEE GEM & MINERAL SOCIETY DUES**

**Year: 2018**

Family  
\$20

Couple  
\$18

Single  
\$12

Child  
\$3

LAST NAME: (Please Print) \_\_\_\_\_ Date Paid: \_\_\_\_\_ Amount: \_\_\_\_\_

FIRST NAME(s): \_\_\_\_\_

ADDRESS: \_\_\_\_\_

CITY: \_\_\_\_\_ STATE: \_\_\_\_\_ ZIP: \_\_\_\_\_

PHONE: \_\_\_\_\_ ANNIV: \_\_\_\_\_ - \_\_\_\_\_ BDAY: \_\_\_\_\_ - \_\_\_\_\_ / \_\_\_\_\_ - \_\_\_\_\_  
Month Day Month Day Month Day

EMAIL: \_\_\_\_\_

RENEWAL \_\_\_\_\_ NEW \_\_\_\_\_ CASH \_\_\_\_\_ CHECK # \_\_\_\_\_ RECD BY \_\_\_\_\_

Owyhee Gem & Mineral Society  
PO Box 1053,  
Caldwell, ID 83605-1053

**Owyhee Gem and Mineral Society Purpose:**

To promote interest in the wonders of nature and in particular, rocks, gems, minerals, and fossils.  
To conduct field trips for exploration and collection.  
To encourage as wide a participation as possible in the “Rock Hound” hobby and the many activities that go along with it.

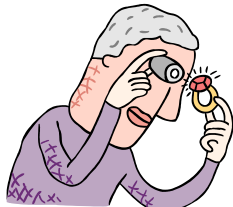
**MEMBERSHIP DUES:**

- Family** - \$20.00 per year
- Couples** - \$18.00 per year
- Singles** - \$12.00 per year
- Children (under 19)** - \$3.00 per year

The Owyhee Gem and Mineral Society was established in 1938 at the College of Idaho in Caldwell, Idaho.

**GENERAL MEETING:** The club meets the third Wednesday of each month at 7:30 P.M. in the Boone Science Hall at the College of Idaho, Room 103, except for the July picnic and the December holiday party. Field trips are scheduled once a month. Visitors are welcome at all these events!

**Bring a friend**—Wear your name tag— Bring an unidentified rock and we'll help you figure out what it is!



**Have You Visited our Club Website?**

Our awesome website has great information on it. There are some great pictures of our outings, and our newsletter is posted on it. Brad Larson, our Web Master, does a great job of keeping it up to date with all kinds of information like upcoming shows, field trip dates, times and much more.

<http://www.owyheerocks.com/>

