

# "Owyhee Gem"

## Owyhee Gem & Mineral Society

P . O . B O X 1 0 5 3 C A L D W E L L , I D A H O 8 3 6 0 5 - 1 0 5 3

### BOARD OF DIRECTORS

**PRESIDENT:** Willa Renken  
(208) 362-3941, Wlr\_dkr@msn.com

**VICE-PRESIDENT:** Roxanne Franklin  
(208) 577-7095, rocksfrank@cablone.net

**SECRETARY:** Christine Deveau  
(208) 994-8026, dragonflylight@q.com

**TREASURER:** Debbie Lawrence  
(208) 869-7585,  
debbielawrenceogms@gmail.com

**FEDERATION DIRECTOR:** Ed Moser  
(208) 340-8060, edmoser15@gmail.com

**FIELD TRIP CHAIR:** Robert Murphey  
(208) 590-1848  
Robert.murpheyogms@gmail.com

**ASSISTANT:** Dale Rawson  
(208) 283-7900

**SHOW CHAIR:** Kathi Larson  
(208)465-8083, redkatnthat@gmail.com

**ASST. SHOW CHAIR:**  
Paul Deveau (208) 994-8025  
devidaho@q.com

**NEWSLETTER EDITOR:** Denise  
Stringer, (208) 283-1903,  
denisemstringer@gmail.com

**HISTORIAN:** Pauline Prather  
(208) 459-4139

**MEMBERSHIP:** Kim Bashford  
(208) 454-7287, kmcewan1957@msn.com

**ROADSIDE CLEAN-UP:** Bill Anderson  
(208) 919-3507,  
billybushman1@yahoo.com

**SUNSHINE:** Jewels Haines  
(760) 331-3443, jewelsmalia@yahoo.com

**WEBMASTER:** Brad Larson  
ogms.webmaster@gmail.com

### October President's Message

Hello fellow rockhounds, hope this finds you all well and enjoying the fall season! This month's meeting will be held at the Caldwell Elk's at 1015 N Kimball Ave, Caldwell, ID 83605. The meeting will start at 7pm. We will have a slab drawing so if you can donate slabs please do so. It is greatly appreciated as we are trying to stay as close to normal as is possible. The program this month will be given by Deana Ashton and Roxanne Franklin. I hope you have all been enjoying the different takes on our member's favorite rocks. I am learning quite a lot about the various materials.

At our last meeting we voted on a theme for our Annual Gem Show in March. It will be "Still Rockin' Fun in 21". Paul has been printing up flyers for the anticipated show so if you have ideas for the format please let him know. Kathi is encouraging you to all keep tumbling, making critters & sewing grab bags for the upcoming show. Remember that we will be paying you for your tumbles, the only prerequisite is they be nicely polished and a full 5- gallon bucket will get you a check for \$120!

October is our renewal month so be sure to send your membership renewals in. October is the month we have elections for the Board and if there is a need to vote you will need to have paid your membership in order to vote. Kim will be there to take your money or you can mail it in to the PO Box along with the renewal slip in this newsletter.

This month's field trip will be to Graveyard Point. Robert and Dale have done such a fine job this year with the various trips we want to thank them so much for all the extra effort they have given us. Please take a minute and let them know they are appreciated. The trip will be October 24<sup>th</sup> and they will meet at the Extra Mile Chevron on the corner of Hwy 55 & 95 at 8am leave at 8:30am. As our season draws to an end the field trip chairmen are taking requests for next year's trips. So if there is a site you would like to explore or know of please tell them so we can get it incorporated into the New Year's agenda.

We will hope to see all of you on the 21<sup>st</sup> of October at the Caldwell Elk's for our first inside meeting in a while.

- Willa Renken, OGMS President



## OWYHEE GEM & MINERAL SOCIETY GENERAL MEETING MINUTES September 16, 2020

The September OGMS General Meeting was called to order by **President Willa Renken** at 7:00pm at Caldwell Memorial Park, 618 Irving, Caldwell, Idaho on 16 September 2020. A motion to accept the minutes as printed in the newsletter was made by Ed Moser, Roxanne Franklin seconded, the motion passed.

Our **'My Favorite'** program was done by Robert Murphey and Roxanne Franklin. Robert's favorite rock is jasper. He brought several examples and shared lots of information and books about all the kinds and colors of jasper... Roxanne's presentation was ... Bogwood... a petrified wood that is found in a variety of colors. Both presentations were quite informative... there's so much to know and learn about this great hobby! Thank you Robert and Roxanne!!!

Willa invited any new members/visitors to introduce themselves, they were welcomed to OGMS.

**Secretary: Chris Deveau** received a dealer contract for the Rock Show, which was given to Show Chair, Kathi Larson. Two memberships and payment for a newsletter advertisement were given to Kim Bashford, Membership. A letter with copies of the Orma J. Smith Museum Annual Report was received and shared with the membership.

**Vice President: Roxanne Franklin** asked for volunteers to do a "My Favorite" presentation for the club. Deana Ashton stepped up for next month... hopefully others in the membership will also take part. The form to help make your presentation is included in the newsletter.

**Treasurer: Debbie Lawrence** gave a summary of the OGMS accounts, including recent deposits and checks for the club.

**Show Chair: Kathi Larson** advised that there were still two unpaid contracts for the 2021 show. Several ideas for the show theme were discussed and voted on. The winner for next year is... **"STILL ROCKIN' FUN IN 21"**! The show will be held on Saturday and Sunday, the 6<sup>th</sup> and 7<sup>th</sup> of March.

**Federation Chair: Ed Moser** has not heard anything from the Federation, but he reminded us to keep saving stamps... (cancelled or not). The stamps are collected and delivered to the Federation to be sold to stamp collectors... the funds raised by the sale of the stamps are then donated for breast cancer research.

**Sunshine Chair: Jewels Haines** was unavailable, but please remember to contact her if you know of a member that needs a little 'SUNSHINE' sent their way.

**Field Trip Chair: Robert Murphey** shared that the field trip last month to Wagon Town for Bogwood was quite a success. Lots of great specimens... great turn out! The September trip is scheduled for the Blue Egg Claim on Saturday, 19 September 2020. Meet at the Homedale Park by the tank at 8:00 am and leave at 8:30. You need a 4-wheel drive or high clearance vehicle... bring digging tools (the best stuff is down about 3 feet)... and bring lots of water. Robert reminded us to be ready to share any ideas for next years' trips... he and Dale are putting the list together. Robert also reminded us that the Boise Club has invited OGMS to their Beacon Hill Claim for a field trip on Saturday and Sunday, the 26<sup>th</sup> and 27<sup>th</sup> of September. They will meet at the Ontario, Oregon rest stop at 8:00 am, leaving as a caravan at 8:30 for the claim.

### Unfinished Business:

- Willa asked if we have a member of the Caldwell Elks Club in our membership, please contact her. We can get a discounted rate for renting a room, if one of us is a member. OGMS will have the next General Meeting at the Caldwell Elks Club, 1015 N. Kimball Avenue, Caldwell, Idaho, on Wednesday, 21 October 2020 at 7:00pm. The College has NOT reopened to us yet!
- Kim Bashford did a lot of legwork for the club, checking on a place for the Christmas Party. It will be held at the Nampa Elks Club, 1116 1st Street South, Nampa, Idaho. It will be a beef and ham dinner with dessert and a no-host bar for \$15.00. The cost is \$7.50 per person, the other half will be paid by OGMS. It will be held in lieu of our December meeting on Wednesday, 16 December 2020.
- Willa thanked everyone who volunteered to pick up the free petrified wood. Dale Rawson found it already on a pallet and delivered it to Darell and Janie's. We appreciate our volunteers... especially with the Rock Show coming soon.
- The new black lights were ordered for the club, to be here in time for the show in March.

### New Business:

- Don Dixon brought crates of tomatoes and cucumbers to share with everyone at the meeting. Thank you, Don!
- The October General Meeting will include voting for all officers of OGMS. If you are interested in becoming an officer, please let Willa know for the election. A list of officers are as follows: **President, Vice President, Secretary, Treasurer, Federation Director, Field Trip Chair, Asst Field Trip Chair, Show Chair, Asst Show Chair, Newsletter Editor**

We had a slab sale... \$1.00 a slab, there were some very nice pieces donated by our members... Thank You! Please bring your slabs to the next General Meeting – there will be a slab drawing!

Deanna Moser won the door prize, a Washington Jade sphere, given by Kathi Larson, who won last month.

The OGMS Board Meeting will be held at the Caldwell Memorial Park, 618 Irving Street, Caldwell, Idaho, on Monday, 28 September 2020 at 7:00pm.

**The October General Meeting will be held at the Caldwell Elks Club, 1015 N. Kimball Avenue, Caldwell, Idaho on Wednesday, 21 October 2020 at 7:00pm.**

The meeting was adjourned at 8:20 p.m. by the President.

Respectfully submitted: Christine Deveau, Secretary





## My Favorite—by Robert Murphey

My Favorite Rock is Jasper. The reason it is my favorite is due to the immense variety of color variations, uses and the ability to make so many different items out of it from tools to jewelry. Below is some information I have pulled from various online resources to give you Jaspers Properties, History and Types of Jasper and Identification.

### Physical Properties of Jasper

- Jasper Chemical composition: SiO<sub>2</sub>
- Class: tectosilicate
- Crystal system: Hexagonal-R; 32 (trigonal-trapezohedral)
- Crystal habit: massive microgranular quartz
- Specific gravity: 2.58-2.91
- Index of refraction: 1.54-1.55



### Historical Information and Uses

Jasper has been used as gemstones and other ornamental objects for thousands of years. In medieval times jasper was said to give the wearer, with God's help, the power to heal insanity and to heal those possessed by devils. In the fourth century, the wearing of green jasper was said to bring rain and to cure snake bites. Jasper amulets were engraved with passages from the Book of the Dead by the ancient Egyptians to procure safe passage for the deceased in the realm of the dead. Some of the earliest primitive stone tools (axes) fashioned by man's ancestors 2.5 million years ago in the Omo valley in Ethiopia, were made of quartz varieties such as jasper or chert. These materials were used because of their hardness and their isotropic brittleness which made it possible to shape the tools with relative ease.

The astrological sign of jasper is Leo.

Jasper is an alternate birthstone for the month of January.

### Types of Jasper

Jasper is an opaque rock of virtually any color stemming from the mineral content of the original sediments or ash. Patterns arise during the consolidation process forming flow and depositional patterns in the original silica rich sediment or volcanic ash. Hydrothermal circulation is generally thought to be required in the formation of jasper.

Jasper can be modified by the diffusion of minerals along discontinuities providing the appearance of vegetative growth, i.e., dendritic. The original materials are often fractured and/or distorted, after deposition, into diverse patterns, which are later filled in with other colorful minerals. Weathering, with time, will create intensely colored superficial rinds.

The classification and naming of jasper varieties presents a challenge. Terms attributed to various well-defined materials includes the geographic locality where it is found, sometimes quite restricted such as "Bruneau" (a canyon) and "Lahontan" (a lake), rivers and even individual mountains; many are fanciful, such as "forest fire" or "rainbow", while others are descriptive, such as "autumn" or "porcelain". A few are designated by the place of origin such as a brown Egyptian or red African.

Picture jaspers exhibit combinations of patterns (such as banding from flow or depositional patterns (from water or wind), dendritic or color variations) resulting in what appear to be scenes or images (on a cut section). Diffusion from a Centre produces a distinctive orbicular appearance, i.e., leopard skin jasper, or linear banding from a fracture as seen in Leisegang Jasper. Healed, fragmented rock produces brecciated (broken) jasper. While these "picture jasper" can be found all over the world, specific colors or patterns are unique, based upon the geographic region from which they originate. Oregon's Biggs jasper, and Bruneau jasper from Bruneau Canyon near the Bruneau River in Idaho are known as particularly fine examples.

### Identifying Jasper

Jasper is a variety of quartz with a chemical composition composed primarily of silicon dioxide. Up to 20% percent of fine dense jasper can be composed of foreign materials, typically hematite, pyrolusite, clay or calcite. It has such a distinctly grainy structure compared to other forms of chalcedony that some scientists even put jasper into its own individual group within the quartz family. Jasper has a microcrystalline structure which means its trigonal crystals can only be seen under high magnification. It can be easily distinguished from many other similar materials by its excellent hardness and lack of cleavage.

You can sign up to give a short 5-15 minute talk about your favorite rock/mineral/gem at the next meeting. Here is a list of questions to you to help you talk about your 'favorite'. The form is also available on our website ... [owyheerocks.com](http://owyheerocks.com). Contact Roxanne Franklin if you are interested in presenting your information—(208) 577-7095, [rocksfrank@cableone.net](mailto:rocksfrank@cableone.net)

**MY FAVORITE**

**My favorite (rock) (mineral) (gem) is** \_\_\_\_\_

**Why I like it** \_\_\_\_\_

**Did you find it or purchase it?** \_\_\_\_\_

**Are there other names for this material?** \_\_\_\_\_

**It is (igneous) (metamorphic) (sedimentary) in origin?** \_\_\_\_\_

**What form is it found in? (crystals) (nuggets) (rock)** \_\_\_\_\_

**What is its relative hardness?** \_\_\_\_\_

**It is made-up of (which element or mineral compounds)** \_\_\_\_\_

**Where is it found?** \_\_\_\_\_

**Is it common or rare?** \_\_\_\_\_

**What are its uses? (manufacturing) (jewelry) (medicine)**

**Other uses?** \_\_\_\_\_

**Is it safe to handle or work with?** \_\_\_\_\_

**Are there any special characteristics?** \_\_\_\_\_

**Radioactive      Fluorescence      Toxic      Large Crystals**

**Used by ancient humans      Rare fossil      Newly Identified**

## OGMS 2020 Field Trips

**Oct 24th:** Graveyard Point for agate and jasper  
Meet at Gem Stop/Extra Mile (Hwy 55&95), meet @ 8am – leave @ 8:30am  
Our next outing will be the last for the season and we are heading out to Graveyard Point to see if there are still any treasures to be found.

This is a mixed type of materials and some digging may be required to get the good pieces. As there are many active claims in the area we need to respect our local miners and be sure we are not collecting on private claims. We hope to see you all there and let's end our 2020 rock hounding adventures with some great material and good memories.



For further information,  
Contact Robert Murphey (208) 590-1848  
or Dale Rawson (208) 283-7990



**Robert  
Murphey**

**ALL FIELD TRIPS ARE SUBJECT TO CHANGE  
DEPENDING ON THE WEATHER AND ROAD  
CONDITIONS.**

**Dale  
Rawson**



### **USEFUL ITEMS TO BRING ON YOUR TRIP**

Buckets, Shovels, Rock Hammer, Pick (Large and Small), Sieve, Gloves, Spray Bottle for Water, Small Scrub Brush, Knee Pads, Magnifier, Plenty of Drinking Water, Food, Appropriate Clothing, Protective Eyewear, Sun Protection, Day Pack or Back Pack, Umbrella, Pry Bar, Tick Spray, First Aid Kit, Shovel and fire extinguisher to put out any fires that may start.

Trips can last most of the day. Generally, a High-Clearance vehicle and sometimes 4WD or an ATV is required.

## September 19th, 2020 Field Trip

We had a great time going to the Blue Egg Club Claim. There were 23 vehicles and 39 total people who joined us of which 14 were guests. We had a lovely drive through Succor Creek recreation area on our way into the Blue country. We could not have asked for a better day as the smoke had cleared and the temperatures we in the upper 60's to mid 70's with passing clouds. There were a lot of small to large eggs dug and some even had gem quality Blue Opal. All in all, from the children to the dogs and even the adults experienced a wonderful fun filled day and went home with some new treasures.

Thank You  
**Field Trip Chair,  
Robert Murphey**



## Vice President's Corner

### Leave a Rock, Take a Rock

If you have lucked out and found some nice rocks bring one to our meeting.

You can leave the rock on the table and anyone who brings one can take a rock. At the end of the meeting if your rock is still there take it home with you.

If everyone brings something to trade each month, we can have the benefit of others' successful trips.



### Monthly Meeting Topic

If you have an idea for a presentation or information session, please contact me: Roxanne Franklin - (208) 577-7095, rocksfrank@cableone.net

## My Favorite—Petrified Bogwood

Petrified Bogwood occurs in many places around the world. Bogwood (more popularly known) or as some call it petrified bog. Occurs when a major volcanic event covers a bog in ash. Algae, fallen trees, vegetation, swamp critters and other things that make up a bog become petrified over time. Bogwood can be quite interesting when cut open. Cutting across sticks, pine cones and even parts of critters may show up in the slices



It has a hardness of 7 on the Mohs scale, 2.5 specific gravity. It is sedimentary.

I like it because every piece can be so different. Colors, sticks, fossils

Confusion with the term- Because Bogwood is wood that has spent hundreds of years becoming waterlogged and semi-preserved by organically rich surroundings, peat bogs and preserved from decay by acidic bog conditions, sometimes for hundreds or even thousands of years. The wood is usually stained brown by tannins dissolved in the acidic water. Bogwood represents the early stages in the fossilization of wood, with further stages ultimately forming jet, lignite and coal over a period of many millions of years.



Gary Green Jasper, also known as Larsonite, and the new batch of material being mined called Caldera Jasper, is a petrified bogwood found in the McDermott area on the Nevada / Oregon border. It's believed to be wood that was covered by volcanic activity between 11-15 million years ago.

Others names, jasper, Gary Green Jasper, Larsonite, Caldara jasper Jasper breaks with a smooth surface and is used for ornamentation or as a gemstone. It can be highly polished.



### Federation Director—Ed Moser

Bring your postage stamps to this month's meeting. Remember to **cut 1/2 inch all the way around the stamp**. The money raised will go to help support cancer research. Thank you all for this. It helps others and it might just help someone you know. Please Respect the Rules when you are out collecting rocks, be careful of ticks and snakes, and have fun.

-Ed Moser, Federation Director  
(208) 340-8060, edmoser15@gmail.com

### October Birthdays

- 1 Celia Quignon
- 7 Amelia Coleman
- 11 Vickie Wise
- 12 Nancy Hahn
- 14 Lynn Cameron
- 14 Marilyn Troyer
- 16 Betty Brown
- 16 Harry Erichson
- 16 Craig Holladay
- 16 Dee Huntley
- 16 Scott Powell
- 18 Daryl Hood
- 18 Christine Newman
- 20 Jamie Gamez
- 20 Bill Sawyer
- 21 Pat McConnel
- 23 Chuck McGuire
- 26 Robert Murphey
- 26 Dennis Waller
- 26 Bill Todd
- 28 Kellen McDaniel
- 29 Sandi Johnson
- 29 Brad Larson
- 30 Aubrey Kopp
- 30 Dan Stevens

September 13 Natalya Hazen

### October Anniversaries

- 1 Russell & Jackie Hone
- 11 Jay & Kim Erb
- 19 Scott & Patti Powell



#### Newsletter Editor

Please let me know if I don't have your correct information, or if you are not on the lists above and should be.

If you would like just the email edition and not the mailed edition, let me know.

Email me at:  
denisemstringer@gmail.com

#### Community Corner

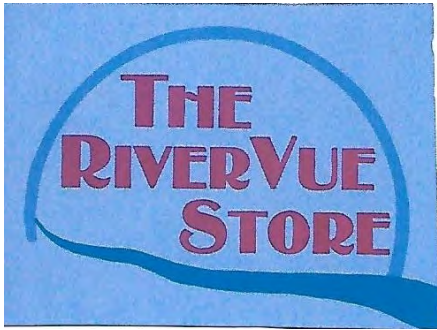
If you are presenting to the community or working with the community on behalf of OGMS, please submit a summary of what you are doing for our "Community Corner". This helps us maintain our non-profit status and gives you a recognition for a job well done.

#### Sunshine Report



Hi, I am Jewels Haines and I am your Sunshine Chairman. If you hear of anyone needing a get-well card or visit, please give me a call at (760) 331-3443.

- Jewels Haines, Sunshine Chairman, jewelsmalia@yahoo.com



**Stone from Arizona**

Anderson Mine—Agate  
 Brenda—Agate & Jasper  
 Burro Creek—Pastelite & Agate

**Stone from Australia**

Noreena  
 Mookite

**Stone from Idaho & Oregon**

Owyhee Picture Jasper  
 Green Moss Agate  
 Tumbled Stones

Amethyst from Uruguay  
 Slabs & Rough  
 Hammers/Tools/Gold Pans  
 Brazilian Agate

Located at the corner of US 95 & Homedale Road  
 26736 Homedale Road, Wilder, Idaho  
 Phone (208) 861-8229 or Text: (208) 258-4250  
 rivervu1@msn.com  
 Open Saturdays 9:00 a.m.—2:00 p.m.  
 April—October

**STRINGER'S GEM SHOP**

Idaho Opals

Picture Jaspers & Plume Agate  
 Rough Rock and Slabs  
 Bolos & Buckles  
 Bookends & Specimens  
 Tumblers & Equipment  
 Grit and Polish

**Close-Out on White's Metal  
 Detector Accessories!**

**W.A. (Bill) Stringer**  
 1812 West Orchard  
 Nampa, Idaho 83651

Halfway between Midland  
 and Middleton Roads

**(208) 466-5169**  
 M-F 1:30-5:30 pm  
 Other Hours By Appointment



**Stone Spheres!**

These are hand-crafted in Nampa by Red Larson.  
 They are made from many different types of stone,  
 both local to Idaho as well as  
 from around the world.

They range in size from  
 2 1/2" to 4 1/2" in diameter.

Pricing depends on both the material as well as the  
 size of the sphere (\$25-\$80).

No two are alike and would make a wonderful  
 addition to your home or office,  
 and make very nice gifts.

Call Red at 208-465-8083

**FOR SALE**

30 year collection of cabochons,  
 slabs, tumbled and world-wide  
 specimens.

Over 25 years at Quartzite, several  
 dozen field trips in California,  
 Nevada, Arizona, Oregon and Utah.

Wholesale prices

Call Dale Brown  
 for appointment

Nampa—(208) 466-9608



**OWYHEE GEM & MINERAL SOCIETY BOARD MEETING MINUTES****September 28, 2020**

The Board Meeting was called to order at 7:00pm by **President, Willa Renken** at Caldwell Memorial Park in Caldwell, Idaho. The motion was made to accept the minutes as printed in the newsletter by Roxanne Franklin; Ed Moser seconded; motion carried.

**Secretary, Chris Deveau** received a financial summary from the Orma J. Smith Museum of Natural History at the College of Idaho to be filed for the club. She also received nine memberships for OGMS which were turned over to Kim Bashford, Membership.

**Vice President, Roxanne Franklin** stated that Deana Ashton and Roxanne will each be making a "My Favorite" presentation at the general meeting in October. If you would like to tell the club about your 'favorite', please contact Roxanne to set it up for one of our meetings. (The form with questions to help you make a presentation is included in the newsletter and on our website... owyheerocks.com). We would love to hear from you!

**Treasurer, Debbie Lawrence** gave a summary of deposits for the bank. (memberships and an ad in the newsletter)

**Show Chair, Kathi Larson** advised that she still had two vendors that had not paid for the 2021 show, but they had assured her, they wanted to take part. We confirmed the theme for next year's show... (voted on at the general meeting), "**STILL ROCKIN' FUN IN 21**".

**Federation Chair, Ed Moser** said we have not heard anything from the NW Federation about upcoming events. He wanted to remind everyone to check with BLM or the Forest Service before heading out. Make sure there are no new fire restrictions in the area. Always bring extra water and a shovel... Be Prepared!! Also save your stamps!

**Membership, Kim Bashford** presented 5 new memberships to the board: Alan Ballinger; William & Heather Trowbridge and family; Rich & Peggy Rabe; Jeff & Debbie Trowbridge and family; and Molly Trowbridge. The motion to accept all the new members was made by Roxanne Franklin, Ed Moser seconded, motion passed. **OGMS would like to welcome you all!**

**Field Trip Chair, Robert Murphey** was unavailable for the meeting, but he sent information to **Roxanne** to share. The trip to the Blue Egg Claim was a resounding success... great turn out... beautiful weather... nice, gem quality blue opal was found. The OGMS final field trip of the year to Graveyard Point will be on the 24<sup>th</sup> of October. We will meet at the Gem Stop/Extra Mile at the corner of Hwy 55/Hwy 95 west of Marsing at 8:00am, leaving at 8:30am.

**Unfinished Business:**

- The October General Meeting will be held at the CALDWELL Elks Club (1015 N Kimball Ave, Caldwell, ID) on Wednesday 21 October 2020 at 7:00pm. The October Board Meeting will also be at the Elks in Caldwell on Monday the 26<sup>th</sup> at 7:00pm.
- We should know the exact date for the OGMS Christmas Party/Meeting by mid October. It will be held at the NAMPA Elks Club (1116 1st St S, Nampa, ID). We are having a ham and roast beef dinner with all the trimmings... OGMS pays half the cost, so each individual will pay \$7.50. A no-host bar will also be available. All members are invited... please keep it in mind to enjoy the camaraderie for the holidays!

**New Business: NONE**

Please attend the General Meeting on October 21st at 7:00pm, Caldwell Elks. We are voting on the Board members for 2021... if you are interested in getting more involved in the club, please contact Willa. We will have a slab drawing at the meeting... please bring your slabs.

The meeting was adjourned at 7:40pm by the President.

Respectfully submitted, Christine Deveau, Secretary

**Upcoming Events**

Owyhee Gem & Mineral Society October Meeting  
October 21, 2020—7:00 p.m.

Caldwell Elks, 1015 N Kimball Ave, Caldwell, ID

Please wear a mask for the health and safety of everyone attending.

**Show Chair  
Kathi Larson**



***STILL ROCKIN' FUN IN 21!***  
**2021 Show Dates: March 6 and 7**  
**O'Connor Field House, Caldwell, Idaho**

**Thoughts for Silent Auction**

As you go out hunting rocks, please keep in mind our yearly show's Silent Auction! If you find a nice sample for our auction, place it in a bucket labeled "OGMS". By the end of the year, your bucket could be full of great rocks and ready to donate for our show. It is amazing how just a few rocks can add up if every "rockhound" contributes!

**Tumble Those Rocks!**

Every person who donates a 5-gallon bucket of tumbled rocks for grab bags for the rock show will receive \$120.00!

**Donations Always Accepted**

- Silent Auction
- Critters and Critter Making Supplies
- Wheel of Gems Prizes
- Grab Bag Prizes
- Polished and Faceted Stones for Sand Dig

**2021 Slate of Officers—Board of Directors**

- President** —Willia Renken
- Vice President** —Roxanne Franklin
- Secretary** —Chris Deveau
- Treasurer** —Debbie Lawrence
- Federation Director** —Ed Moser
- Field Trip Chair** —Robert Murphy
- Asst Field Trip Chair** —Dale Rawson
- Show Chair** —Paul Deveau
- Asst Show Chair** —TBD
- Newsletter Editor** —Denise Stringer

Remember if you would like to be on the Board there is still time. Any of the above offices are eligible for nominations from the floor. Please let Willia Renken know if you would like to be considered for a position before the October general meeting.

**Other appointed positions in the club, but not open for voting during the election:**

- Historian** - Pauline Prather
- Membership** - Kim Bashford
- Roadside Clean-Up** - Bill Anderson
- Sunshine** - Jewels Haines
- Webmaster** - Brad Larson



Owyhee Gem & Mineral Society  
PO Box 1053,  
Caldwell, ID 83605-1053

**Owyhee Gem and Mineral Society Purpose:**

To promote interest in the wonders of nature and in particular, rocks, gems, minerals, and fossils.  
To conduct field trips for exploration and collection.  
To encourage as wide a participation as possible in the “Rock Hound” hobby and the many activities that go along with it.

**MEMBERSHIP DUES:**

- Family** - \$20.00 per year
- Couples** - \$18.00 per year
- Singles** - \$12.00 per year
- Children (under 19)** - \$3.00 per year

The Owyhee Gem and Mineral Society was established in 1938 at the College of Idaho in Caldwell, Idaho.

**GENERAL MEETING:** The club meets the third Wednesday of each month at 7:30 P.M. in the Boone Science Hall at the College of Idaho, Room 103, except for the July picnic and the December holiday party.

Bring a friend—Wear your name tag— Bring an unidentified rock and we’ll help you figure out what it is!

Field trips are scheduled once a month. Visitors are welcome at all these events!



**Have You Visited our Club Website?**

Our awesome website has great information on it. There are some great pictures of our outings, and our newsletter is posted on it. Brad Larson, our Web Master, does a great job of keeping it up to date with all kinds of information like upcoming shows, field trip dates, times and much more.

**<http://www.owyheerocks.com/>**